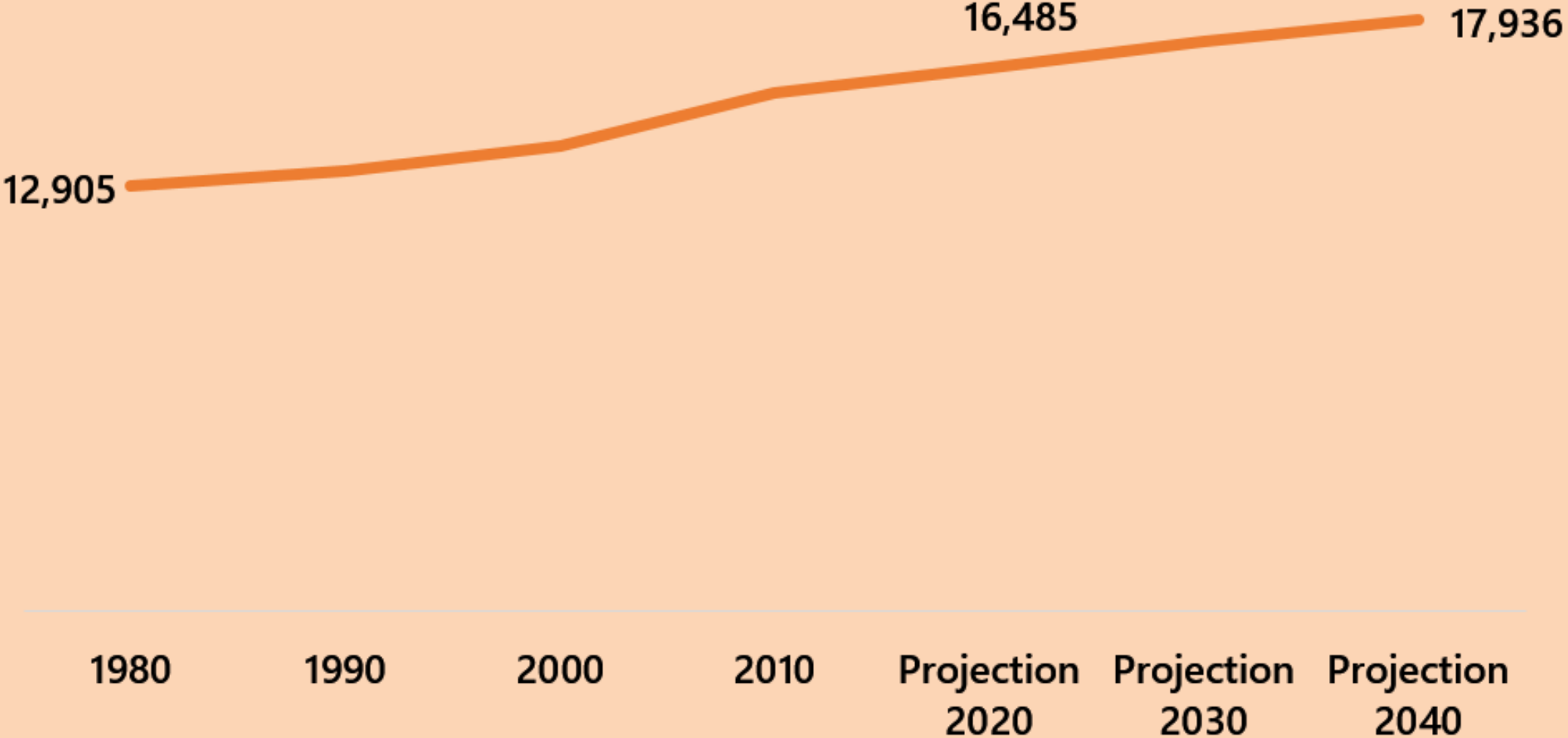


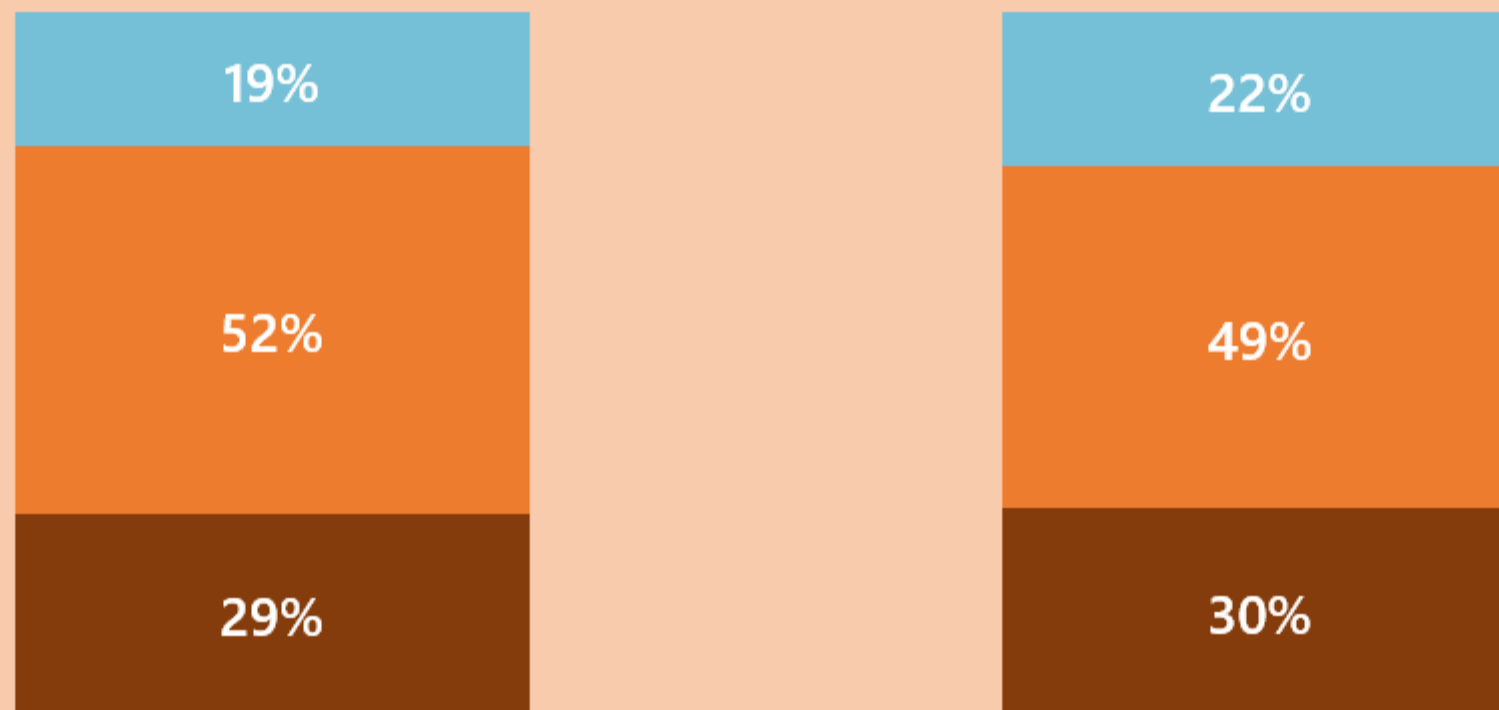
Since 1980, East Longmeadow's population has grown steadily, a trend that is projected to continue over the next 20 years



East Longmeadow's population is growing, and becoming increasingly diverse, (though more than 4 in 5 residents are White Not-Hispanic)

	East Longmeadow 2010 (#)	East Longmeadow 2010 (%)	East Longmeadow 2019 (#)	East Longmeadow 2019 (%)
Total	15446	100%	16242	100%
White, Not Hispanic (NH)	14340	93%	13848	85%
Black or African American (NH)	212	1%	756	5%
Asian (NH)	342	2%	714	4%
Hispanic or Latino	251	2%	629	4%
Other, Including American Indian and Alaska Native, and Native Hawaiian and Other Pacific Islander, and two or more races (NH)	301	2%	295	2%

East Longmeadow's population mix by age has been very stable/consistent from 2010 to 2019

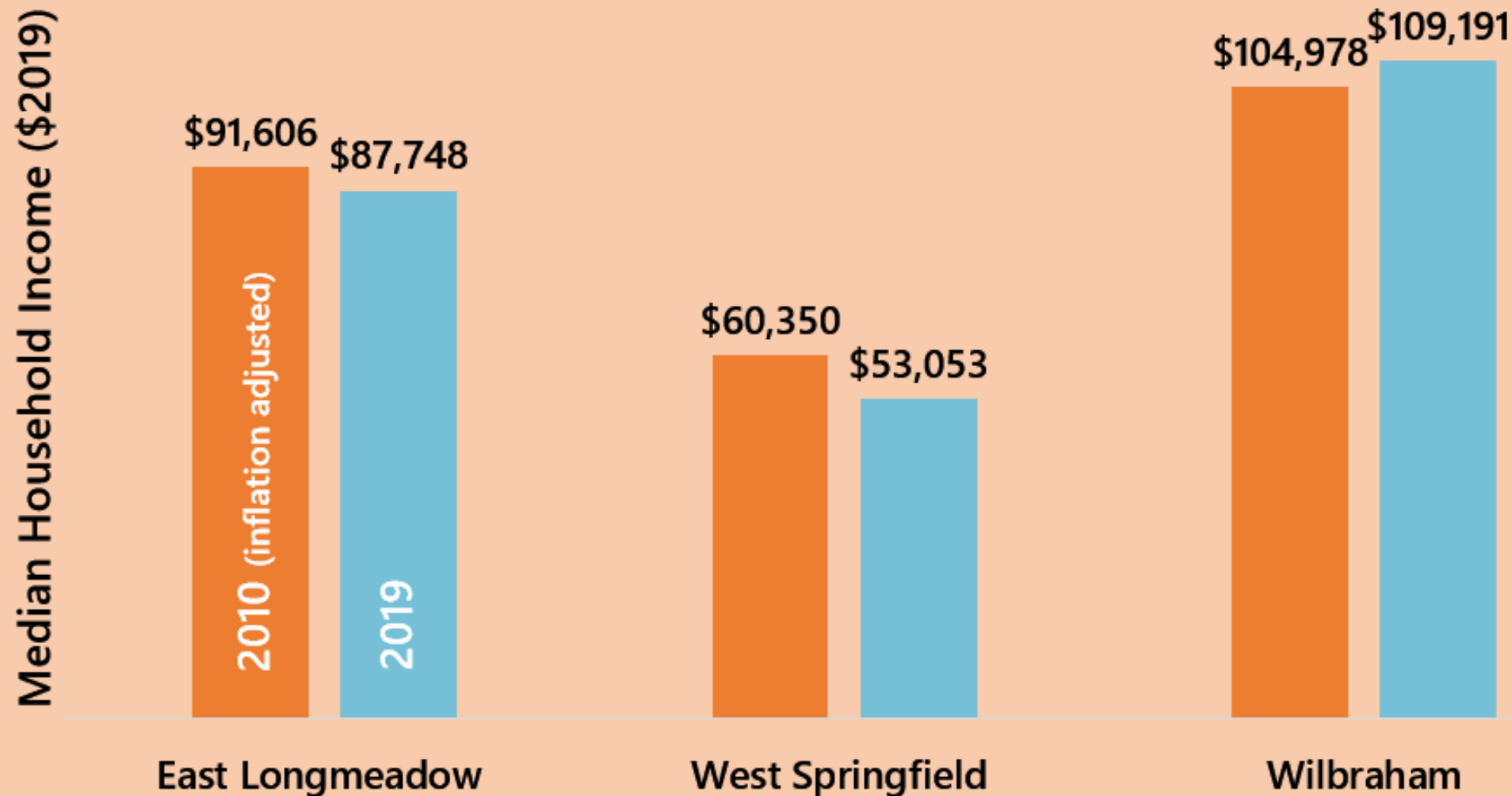


2010

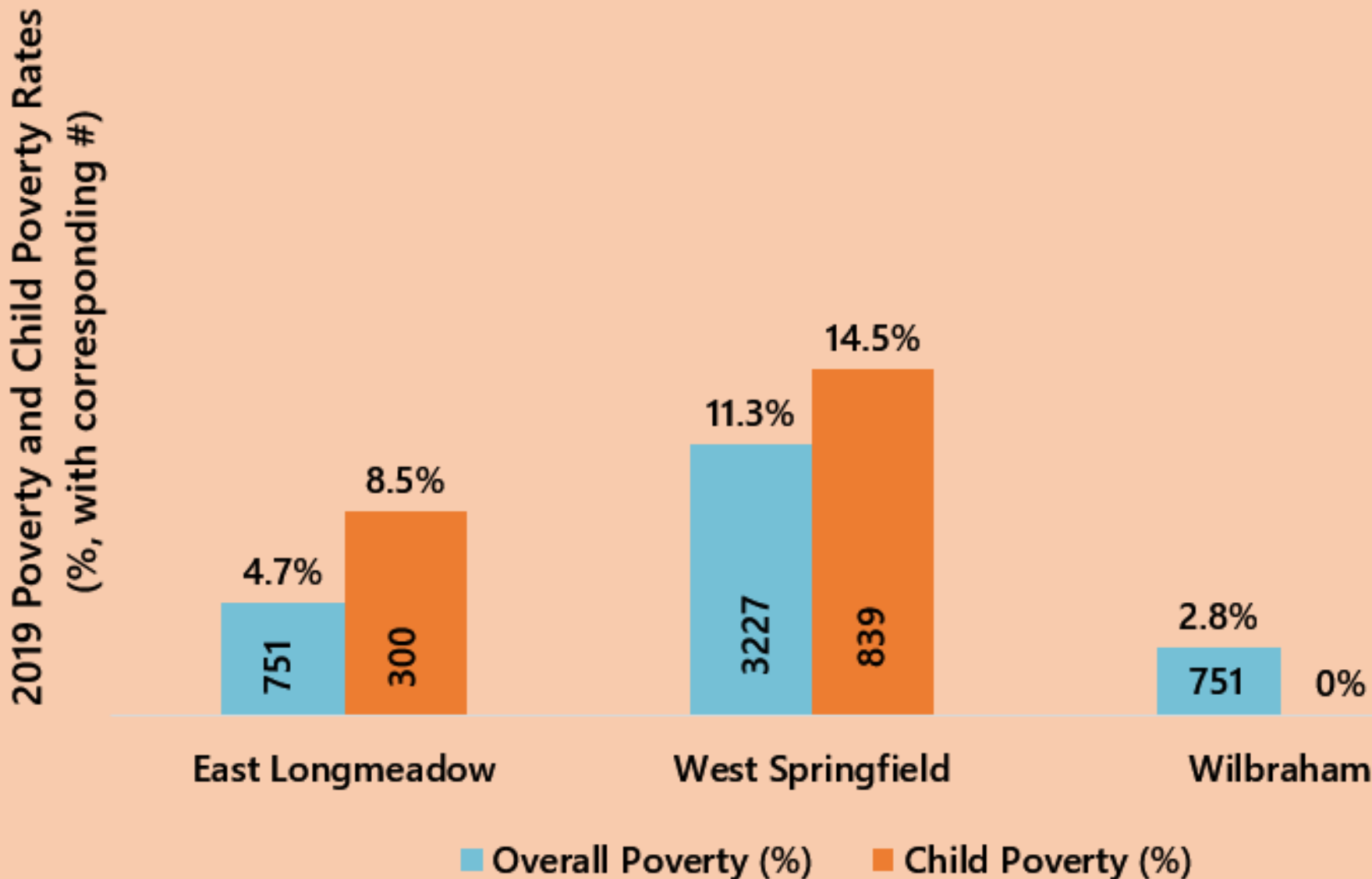
2019

- Seniors (65+)
- Prime Working Age Adults (25-64 years)
- Children and Young Adults (Under age 25)

Inflation-adjusted median household incomes shows slight decline in East Longmeadow and West Springfield, modest growth in Wilbraham between 2010 and 2019



Both overall and child poverty rates in East Longmeadow fall between the rates of West Springfield and Wilbraham



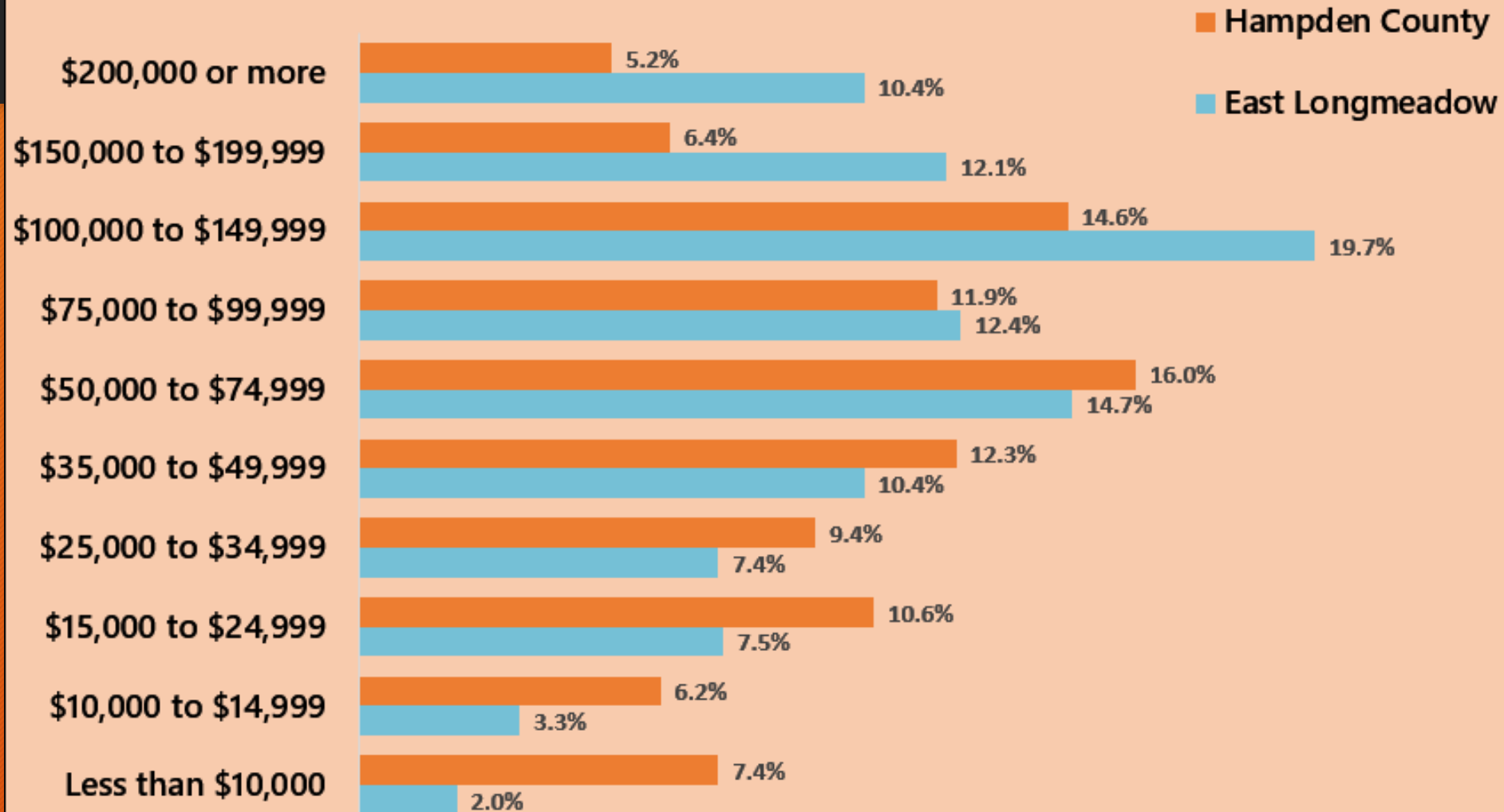
2021 FEDERAL POVERTY GUIDELINES

PERSONS IN FAMILY/ HOUSEHOLD	POVERTY GUIDELINE
1	\$12,880
2	\$17,420
3	\$21,960
4	\$26,500
5	\$31,040
6	\$35,580

Source: US Department of Health and Human Services, <https://aspe.hhs.gov/poverty-guidelines>

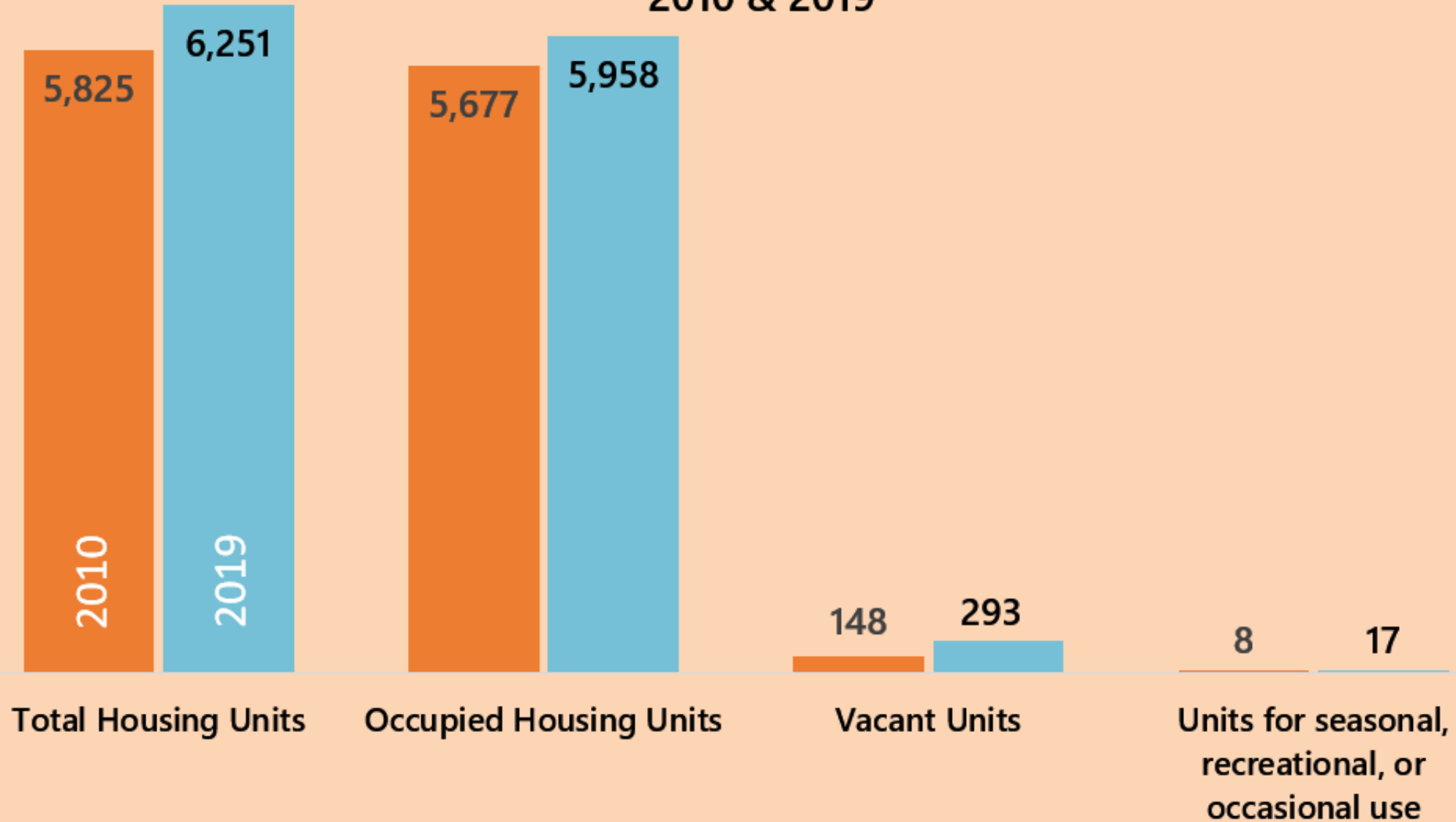
Individuals (and children) in poverty include all people living in households with incomes below the federal poverty level.

More than four in ten (42.2%) East Longmeadow Households have incomes of \$100,000 or more, compared to 26.2% of all households in Hampden County

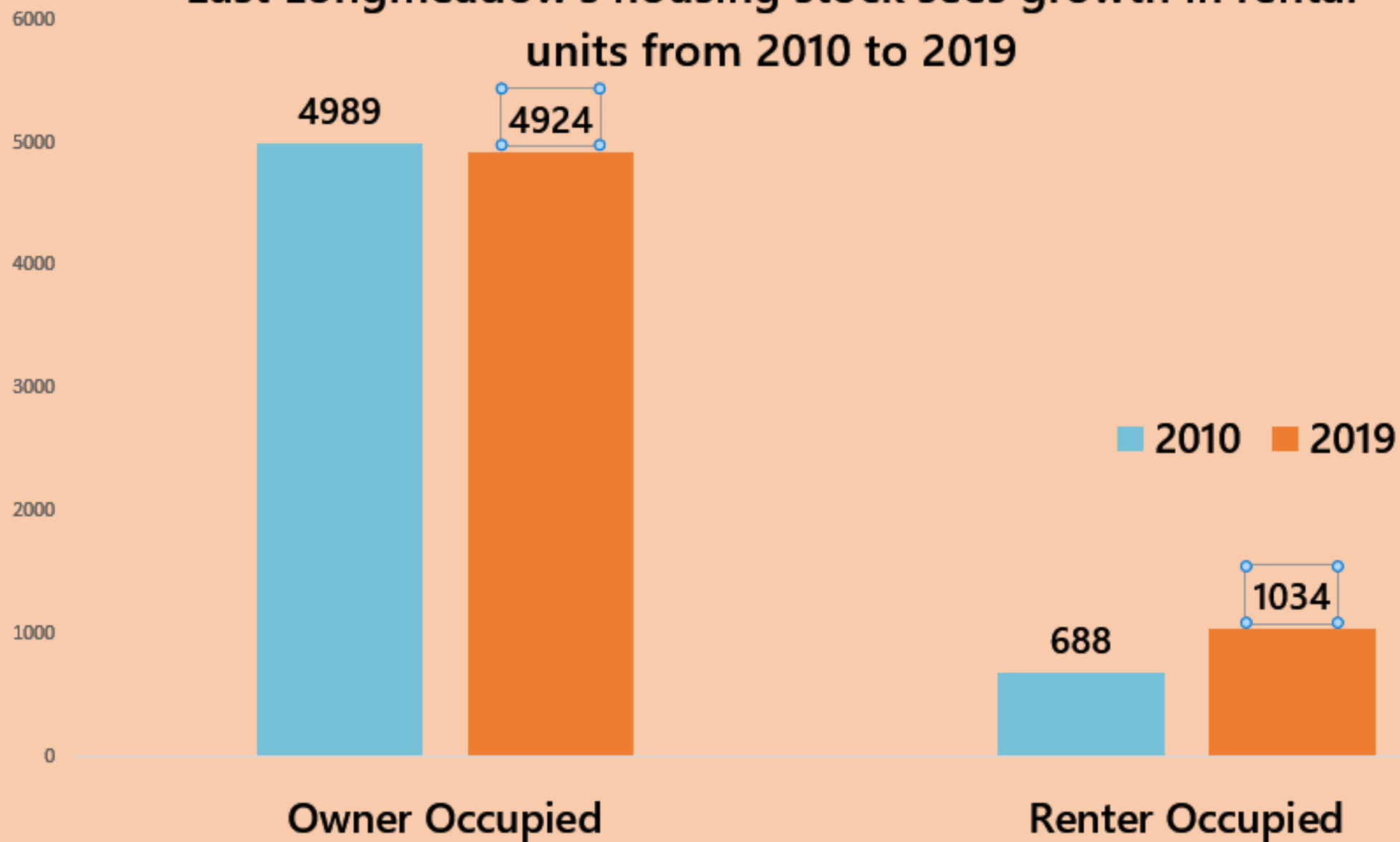


Share of Households at Each Income Level

East Longmeadow has seen growth in # of housing units;
continues to have high occupancy rates, comparing
2010 & 2019



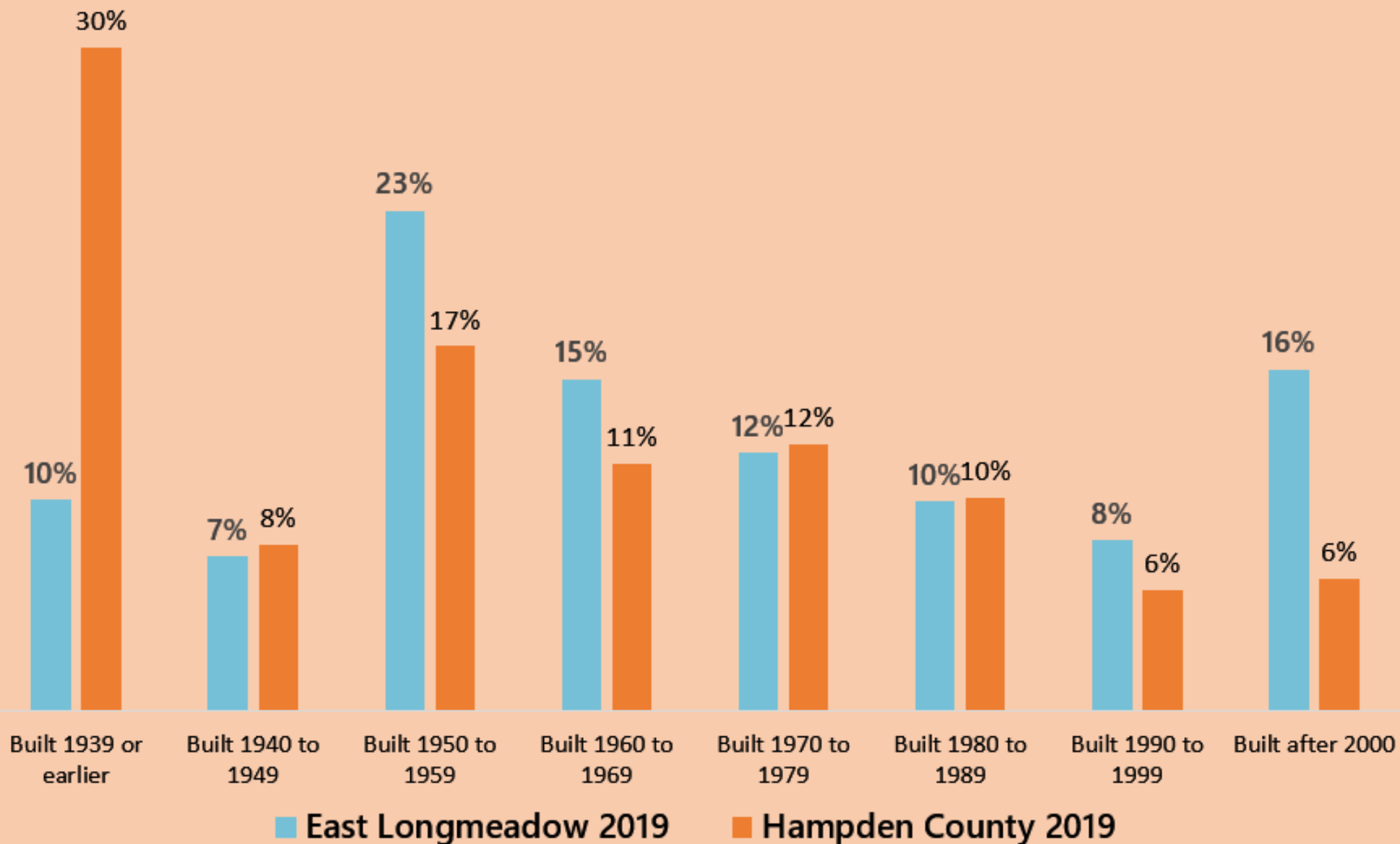
East Longmeadow's housing stock sees growth in rental units from 2010 to 2019



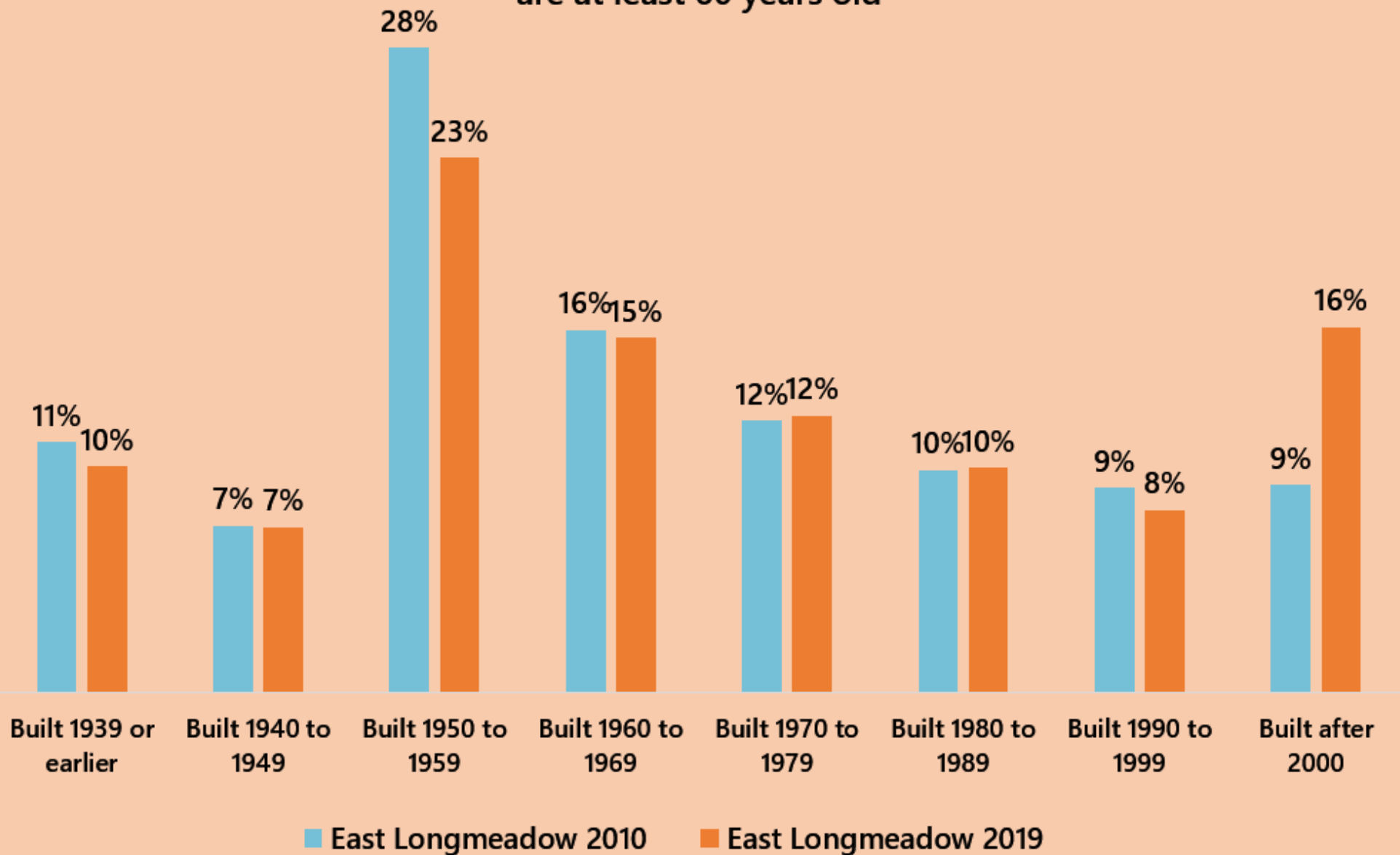
East Longmeadow's Housing Stock continues to be dominated by single unit homes (87% in 2019, compared to 89% in 2010).

UNITS IN EAST LONGMEADOW HOUSING STRUCTURES	2010	2019
Total housing units	5825	6251
1-unit, detached	5208	5443
1-unit, attached	136	49
2 units	144	124
3 or 4 units	61	95
5 to 9 units	72	129
10 to 19 units	102	94
20 or more units	102	317
Mobile home	0	0
Boat, RV, van, etc.	0	0

East Longmeadow housing stock substantially newer than Hampden County overall

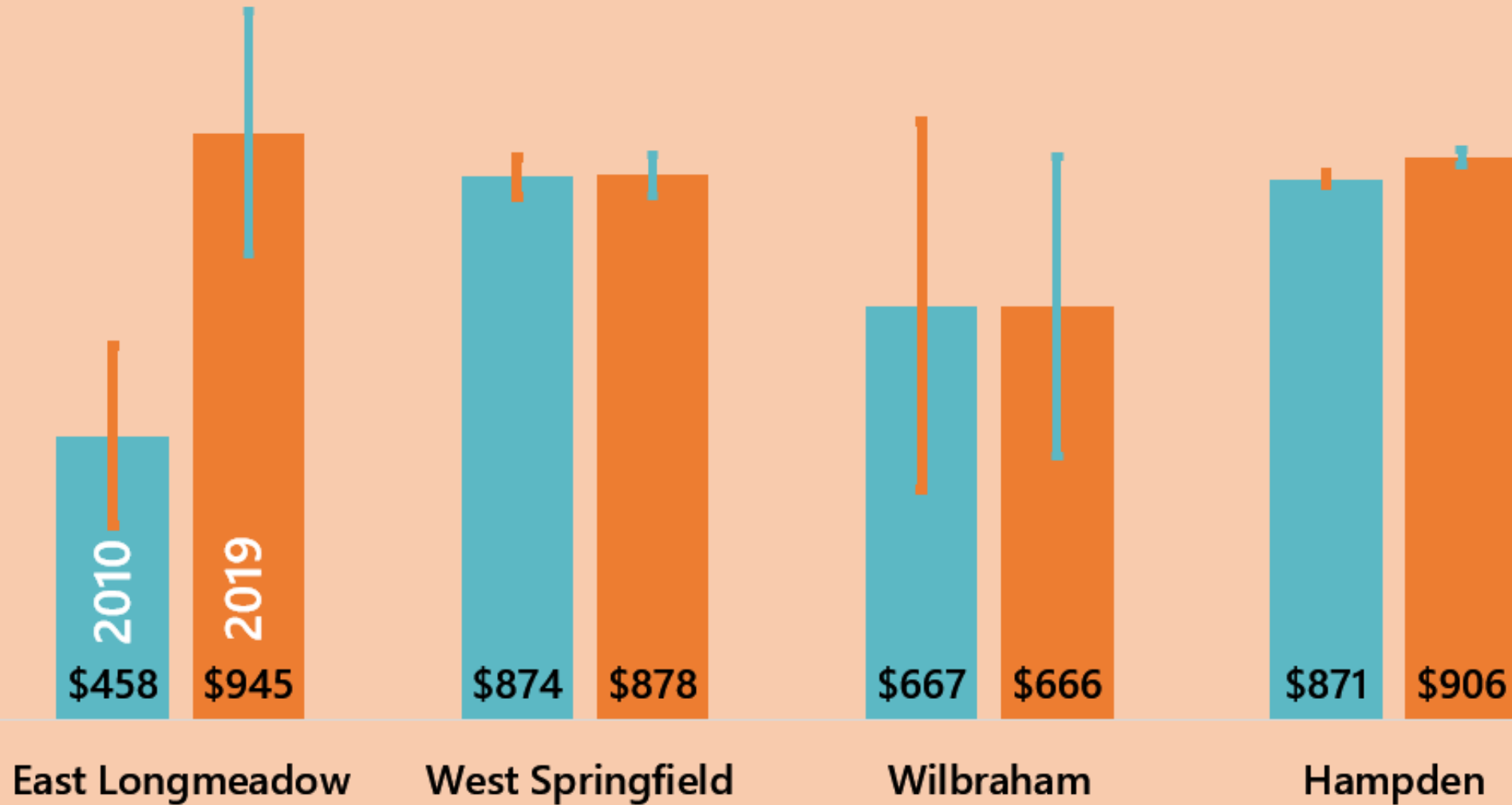


Substantial growth of East Longmeadow homes built since 2000, as share of homes built since 1980 reaches 1 in 3 housing units, but 4 in 10 homes are at least 60 years old



Inflation-adjusted median rent in East Longmeadow has grown substantially since 2010, while County wide changes in Hampden Cy have been modest, comparison towns unchanged**

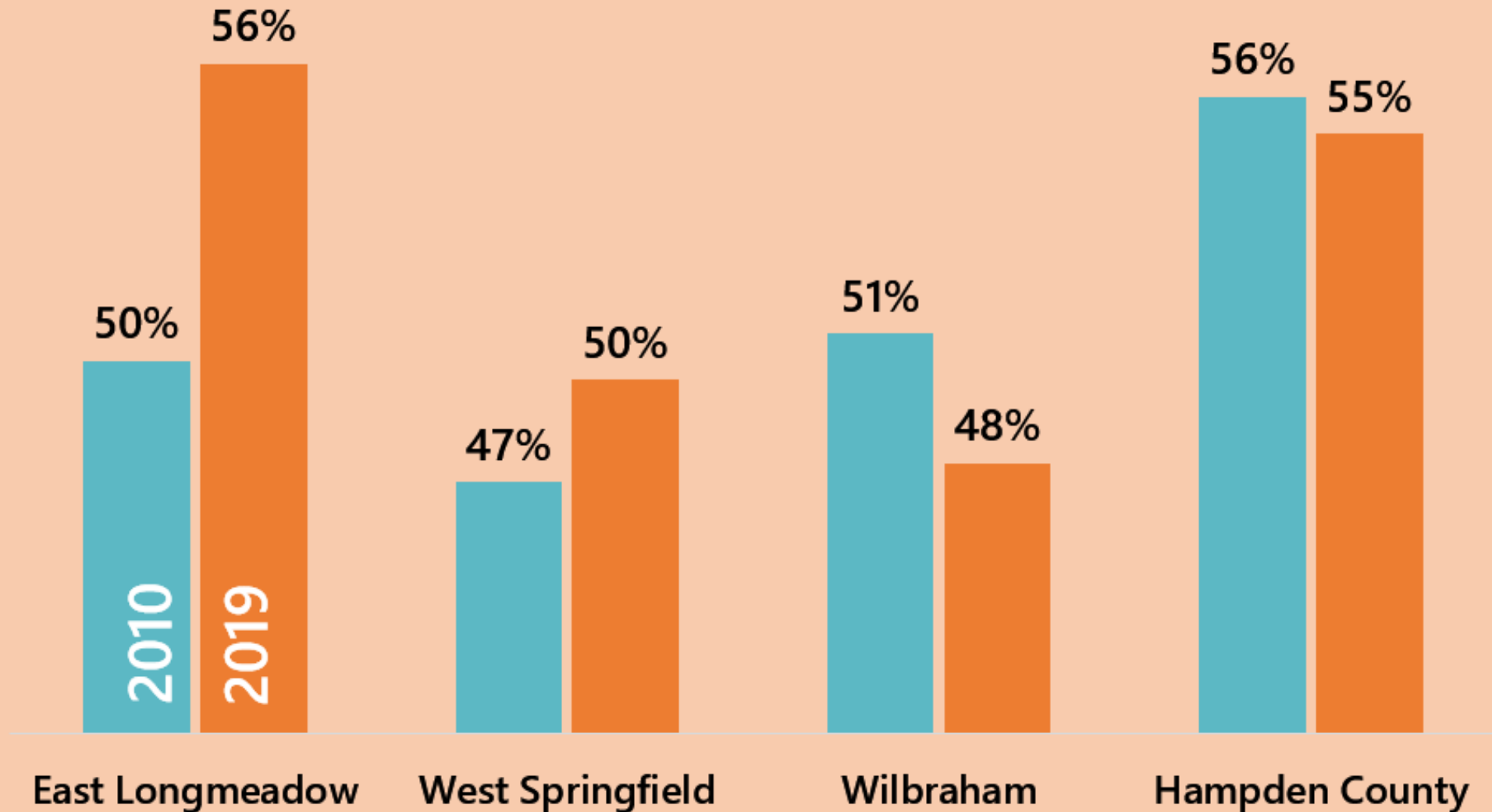
Inflation-adjusted median rent (\$2019)



** Note that indicated margins of error show range of possible real values that these estimates reflect.

TROUBLING INCREASE IN RENTAL HOUSEHOLDS FOR WHICH RENT EXCEEDS 30% OF HOUSEHOLD INCOME, MATCHING HAMPDEN COUNTY AVERAGE, SUBSTANTIALLY HIGHER THAN COMPARISON TOWNS,

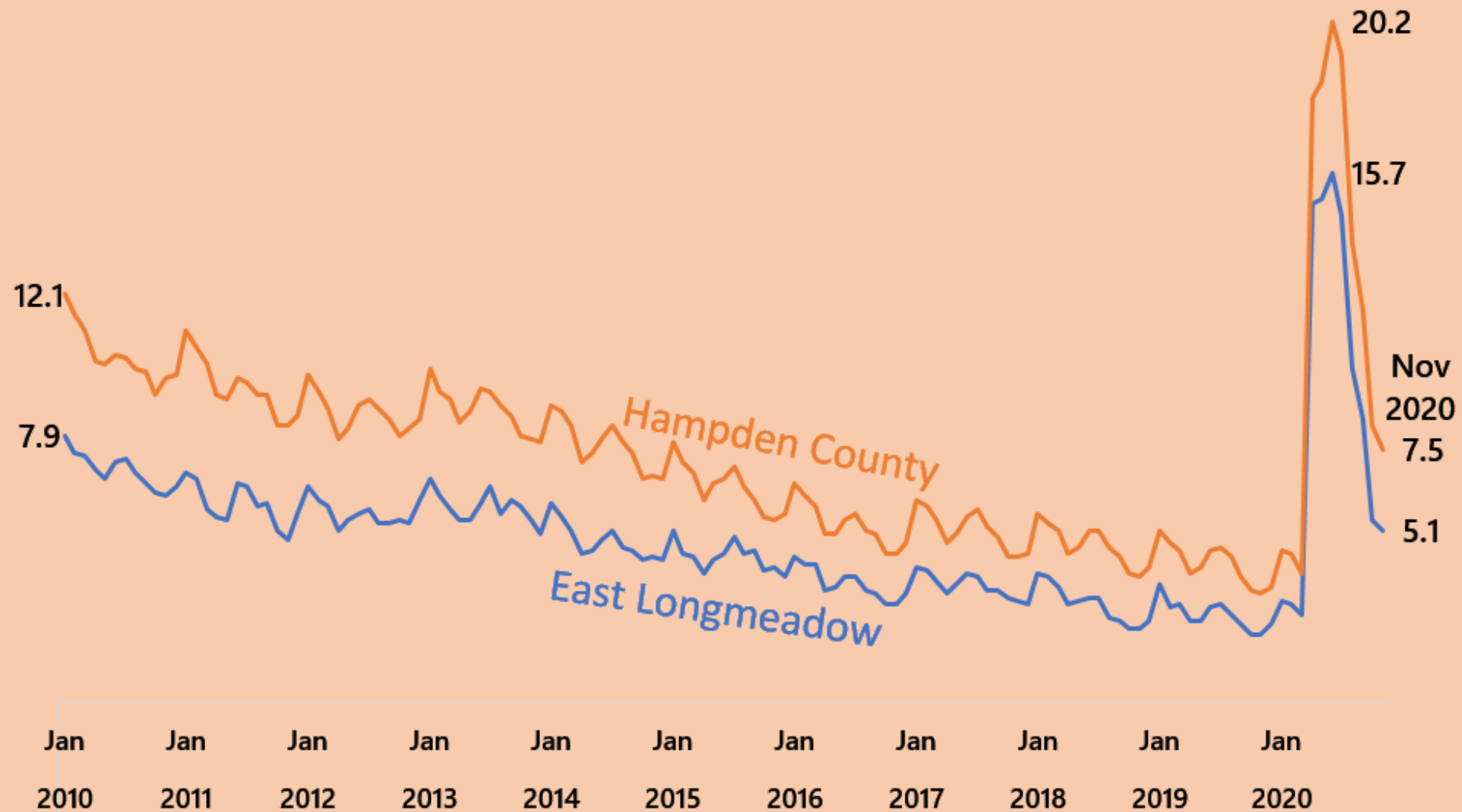
Share of Rental Households Where Rent Exceeds 30% of Household Income



COVID19 Hits East Longmeadow Labor Force, erasing gains achieved through steady expansion through period 2010-early 2020; recovery will bring challenges



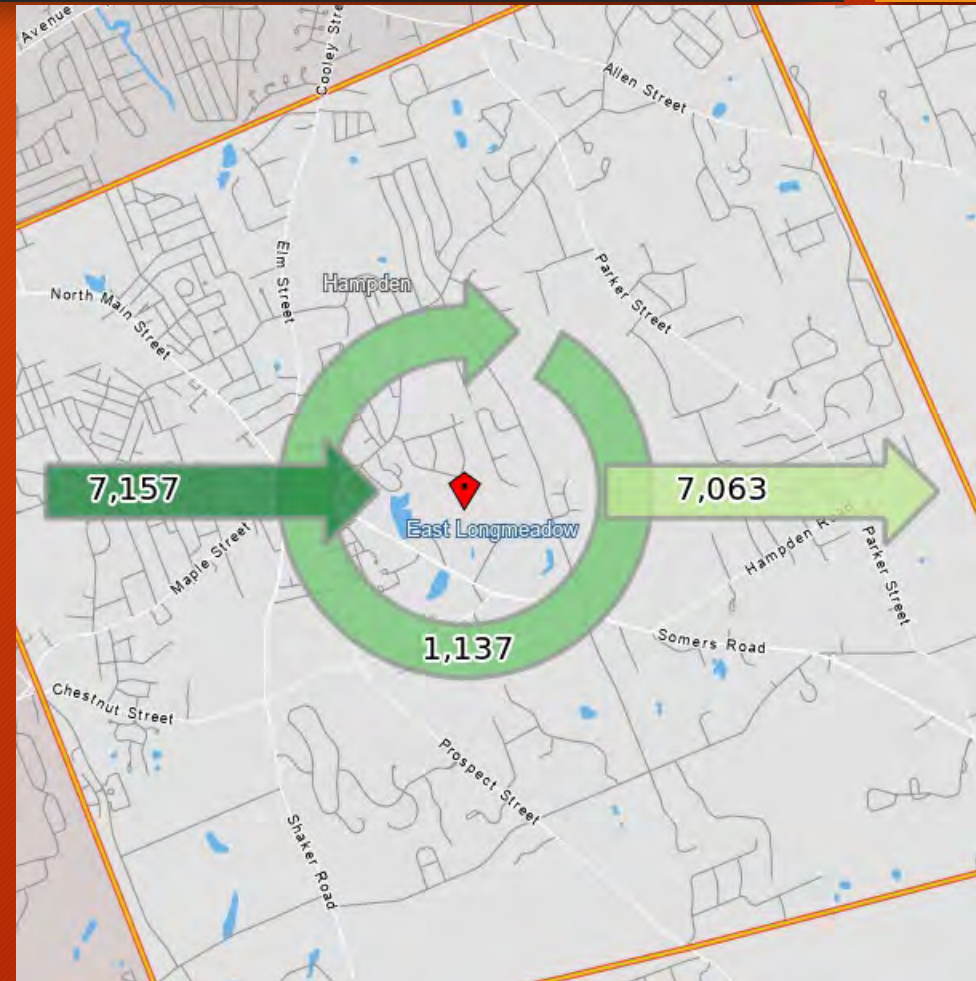
East Longmeadow Unemployment Rate Consistently Lower than Hampden County Overall Rate; Still Recovering from COVID19 economic downturn at end of 2020



Communities in the Pioneer Valley are interdependent. Most people who live in East Longmeadow don't work there. And most people who work in Longmeadow don't live there

Inflow/Outflow Job Counts (All Jobs)

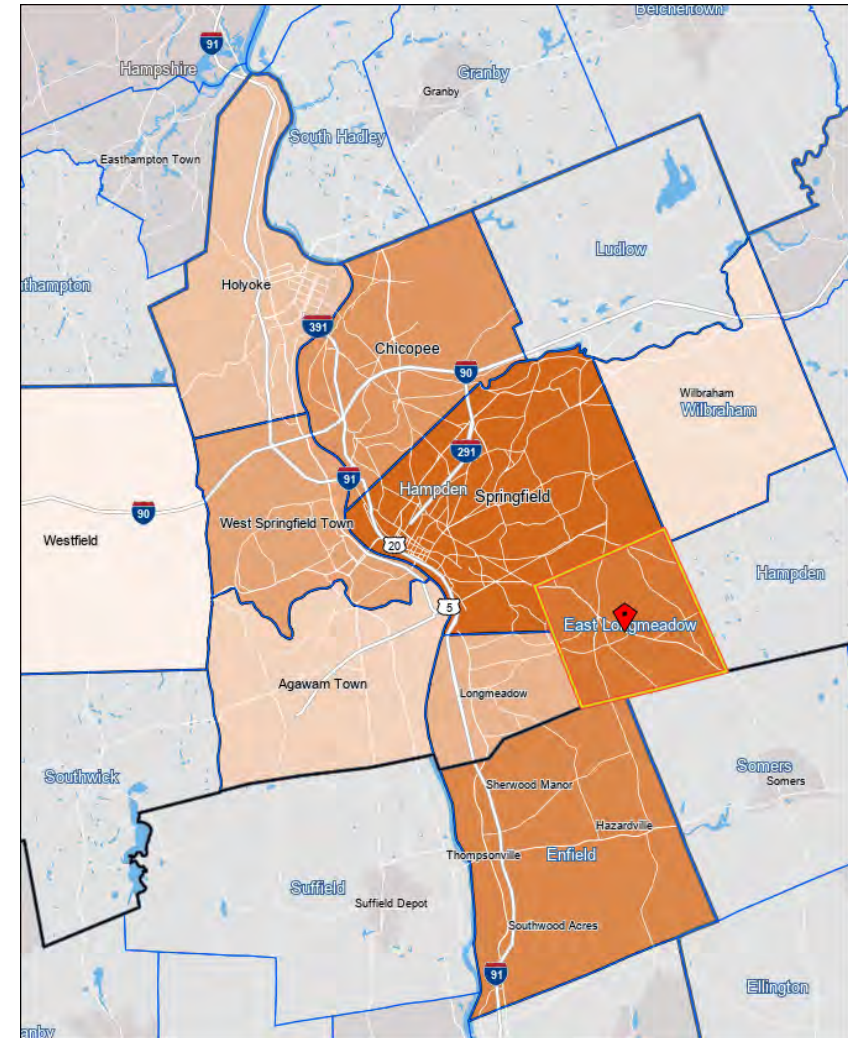
	2018	
	Count	Share
<u>Employed in the Selection Area</u>	8,294	100.0%
<u>Employed in the Selection Area but Living Outside</u>	7,157	86.3%
<u>Employed and Living in the Selection Area</u>	1,137	13.7%
<u>Living in the Selection Area</u>	8,200	100.0%
<u>Living in the Selection Area but Employed Outside</u>	7,063	86.1%
<u>Living and Employed in the Selection Area</u>	1,137	13.9%

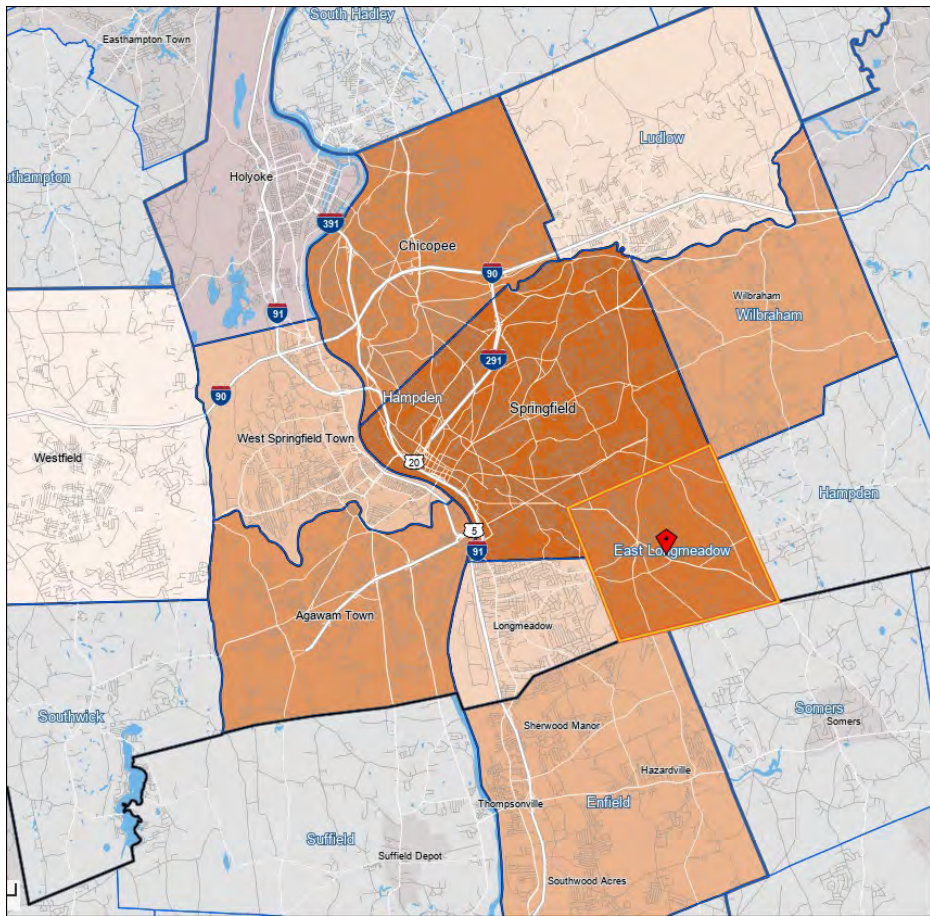


Where do East Longmeadow residents work?

Jobs Counts by County Subdivisions Where Workers are Employed - All Jobs

	2018	
	Count	Share
<u>All County Subdivisions</u>	8,200	100.0%
<u>Springfield city (Hampden, MA)</u>	2,206	26.9%
<u>East Longmeadow town (Hampden, MA)</u>	1,137	13.9%
<u>Enfield town (Hartford, CT)</u>	321	3.9%
<u>Chicopee city (Hampden, MA)</u>	296	3.6%
<u>West Springfield Town city (Hampden, MA)</u>	285	3.5%
<u>Longmeadow town (Hampden, MA)</u>	272	3.3%
<u>Holyoke city (Hampden, MA)</u>	254	3.1%
<u>Agawam Town city (Hampden, MA)</u>	231	2.8%
<u>Wilbraham town (Hampden, MA)</u>	169	2.1%
<u>Westfield city (Hampden, MA)</u>	168	2.0%
<u>All Other Locations</u>	2,861	34.9%





Jobs Counts by County Subdivisions Where Workers Live - All Jobs

	2018	
	Count	Share
All County Subdivisions	8,294	100.0%
Springfield city (Hampden, MA)	2,021	24.4%
East Longmeadow town (Hampden, MA)	1,137	13.7%
Chicopee city (Hampden, MA)	411	5.0%
Agawam Town city (Hampden, MA)	326	3.9%
Wilbraham town (Hampden, MA)	313	3.8%
Enfield town (Hartford, CT)	292	3.5%
West Springfield Town city (Hampden, MA)	281	3.4%
Longmeadow town (Hampden, MA)	276	3.3%
Ludlow town (Hampden, MA)	269	3.2%
Westfield city (Hampden, MA)	248	3.0%
All Other Locations	2,720	32.8%

Jobs by Distance - Work Census Block to Home Census Block

	2018	
	Count	Share
Total All Jobs	8,294	100.0%
Less than 10 miles	5,620	67.8%
10 to 24 miles	1,641	19.8%
25 to 50 miles	381	4.6%
Greater than 50 miles	652	7.9%

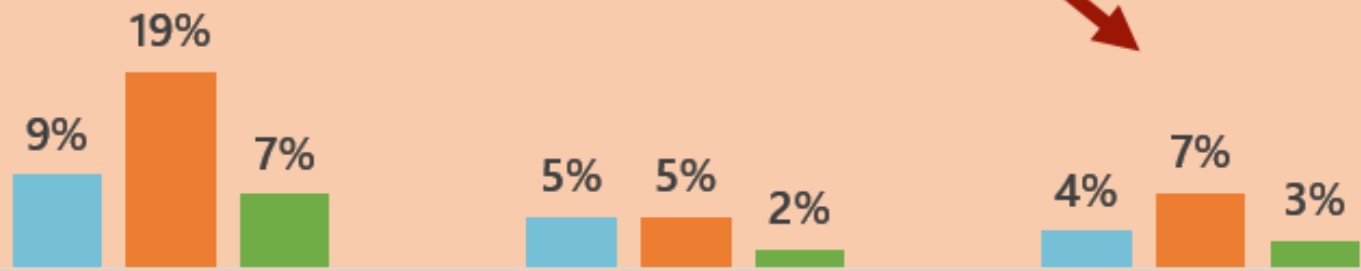
Where do East Longmeadow workers live?

Assessed value of residential property comprises majority of East Longmeadow's 2021 tax base; interesting variation between comparison communities



What is "Personal Property"?

Massachusetts Department of Revenue, Division of Local Services explains: "Personal property generally includes tangible items that are not firmly attached to land or buildings and are not considered to be part of the real estate, for example, merchandise, furniture, machinery, tools, animals and equipment."



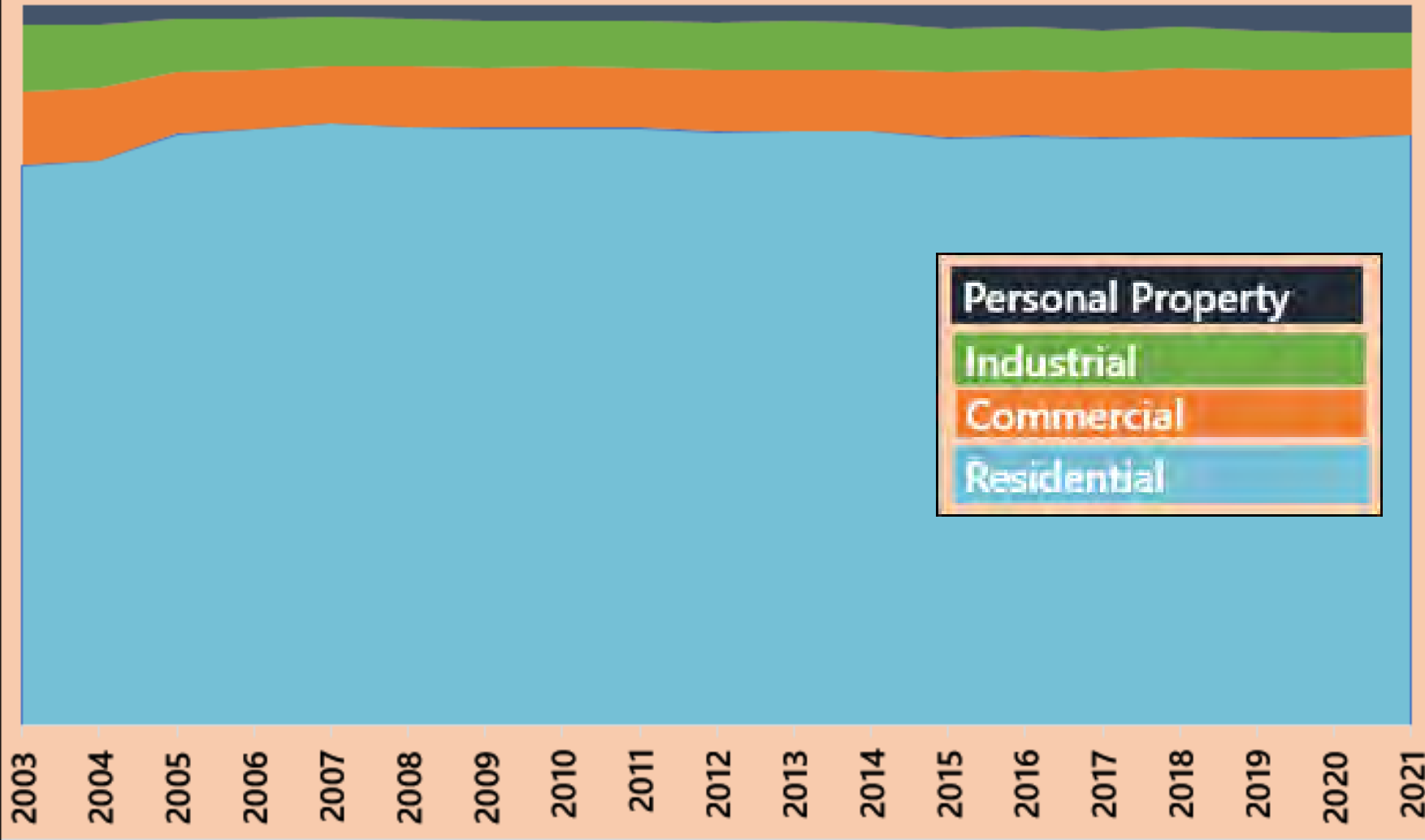
Residential

Commercial

Industrial

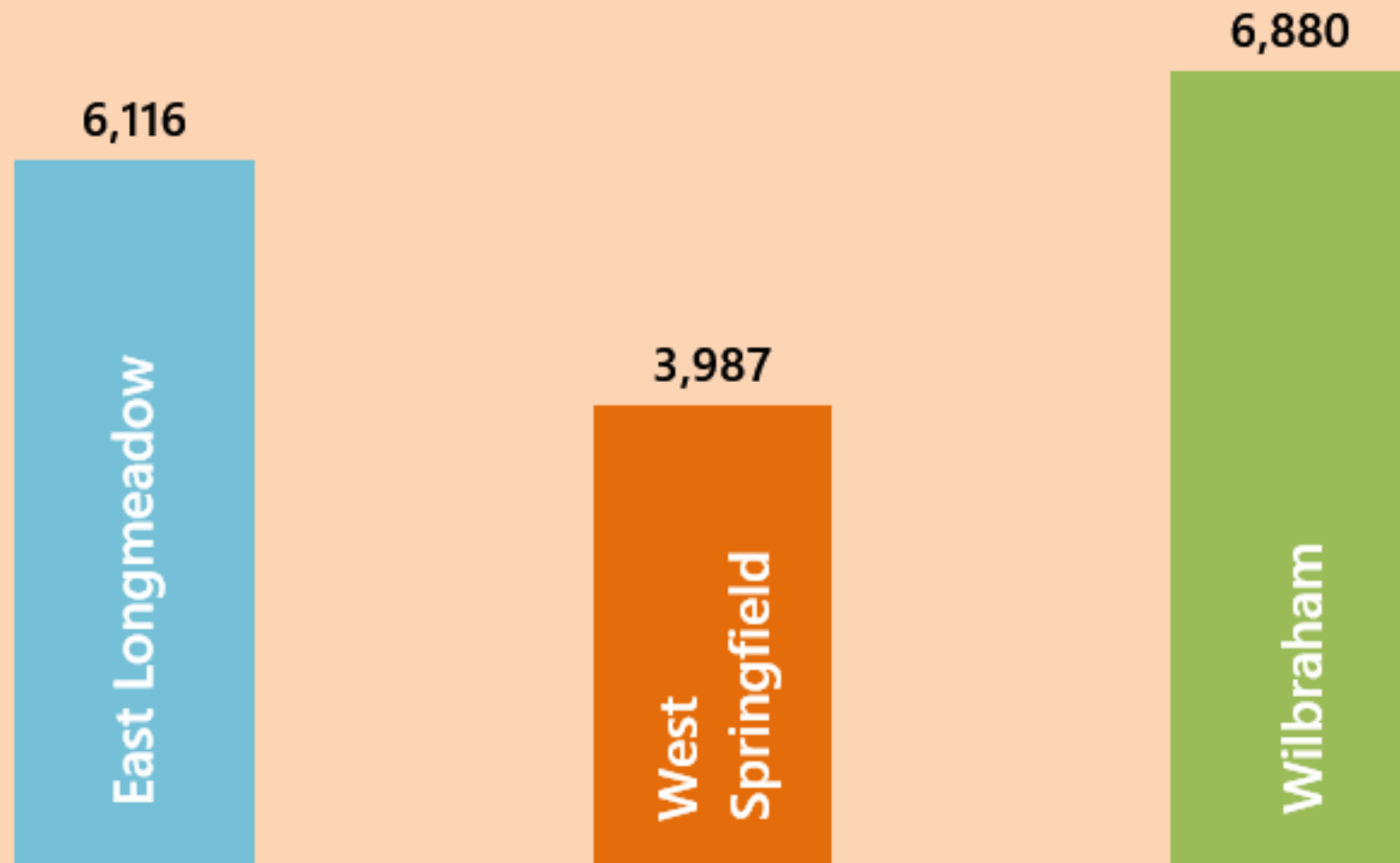
Personal Property

Since 2005, East Longmeadow's mix of assessed land has been remarkably steady, with slight increase of reliance on personal property



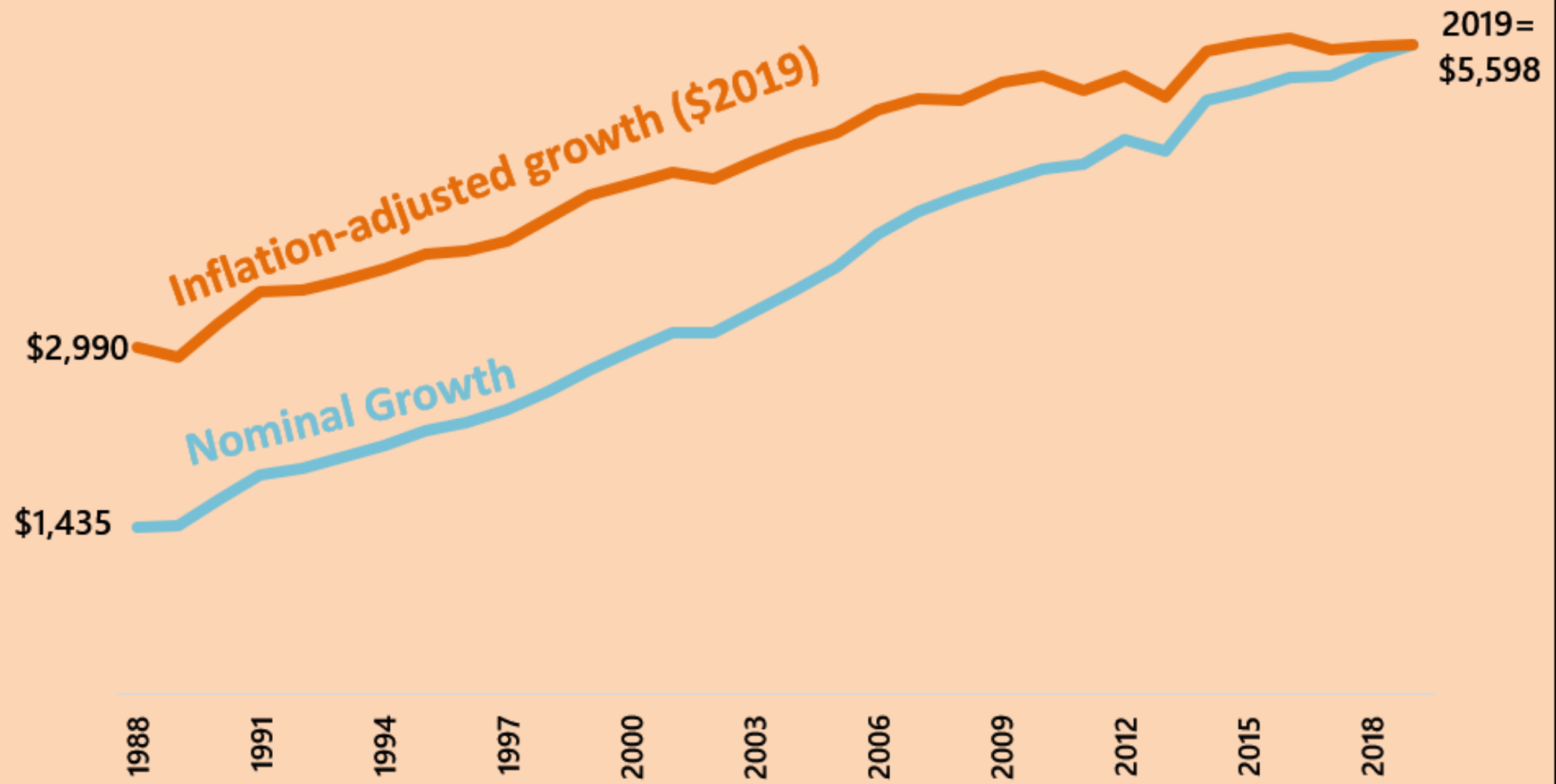
Property Type	2021 Share of Total
Residential	82%
Commercial	9%
Industrial	5%
Personal Property	4%

East Longmeadow's 2021 average single family tax bill falls between its comparison towns, 53% higher than the average bill in West Springfield

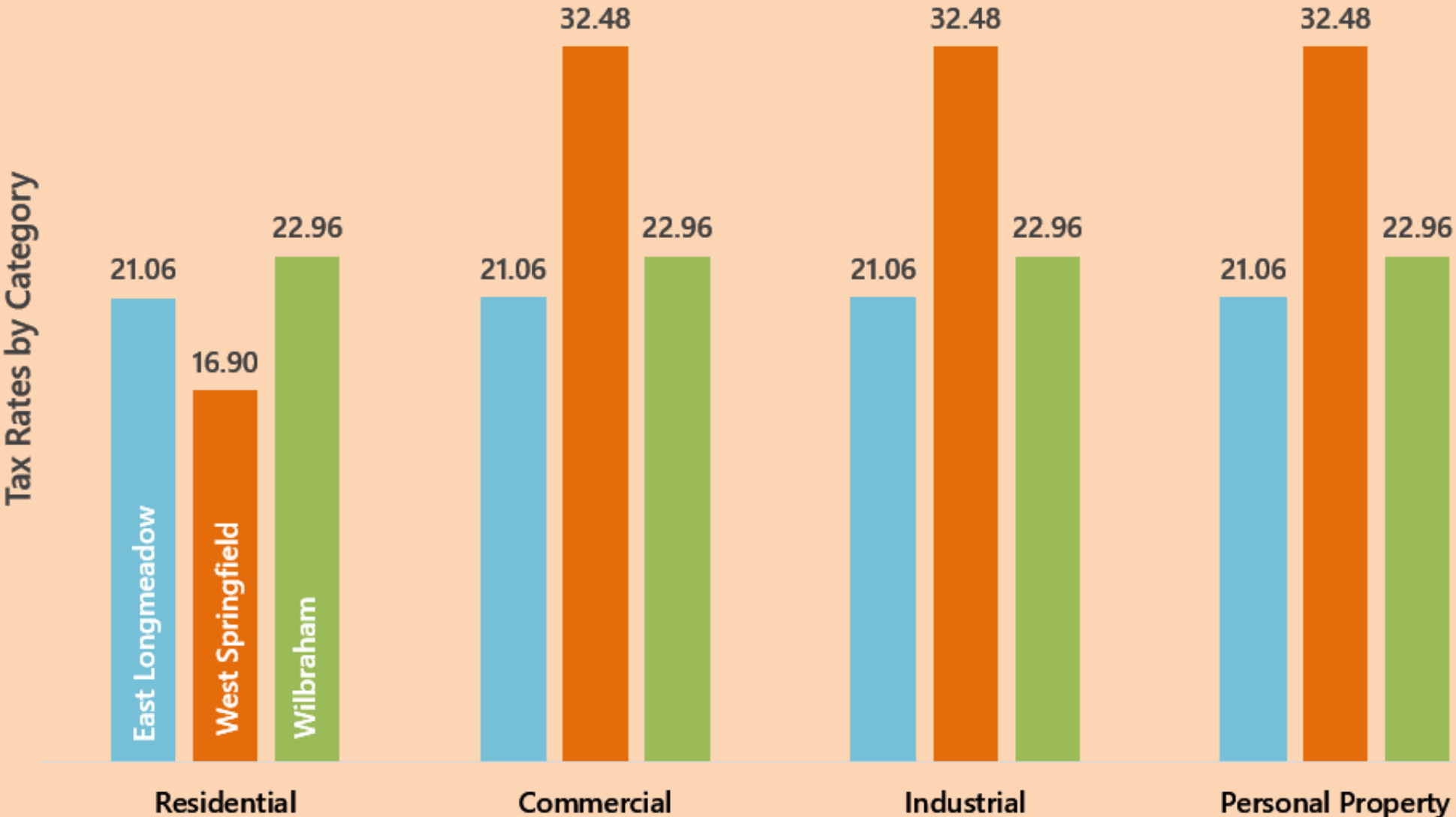


Even when adjusted for inflation, East Longmeadow has been expanding its tax revenues over the course of the past 30+ years, as reflected in growth in average local tax bill for single family homes

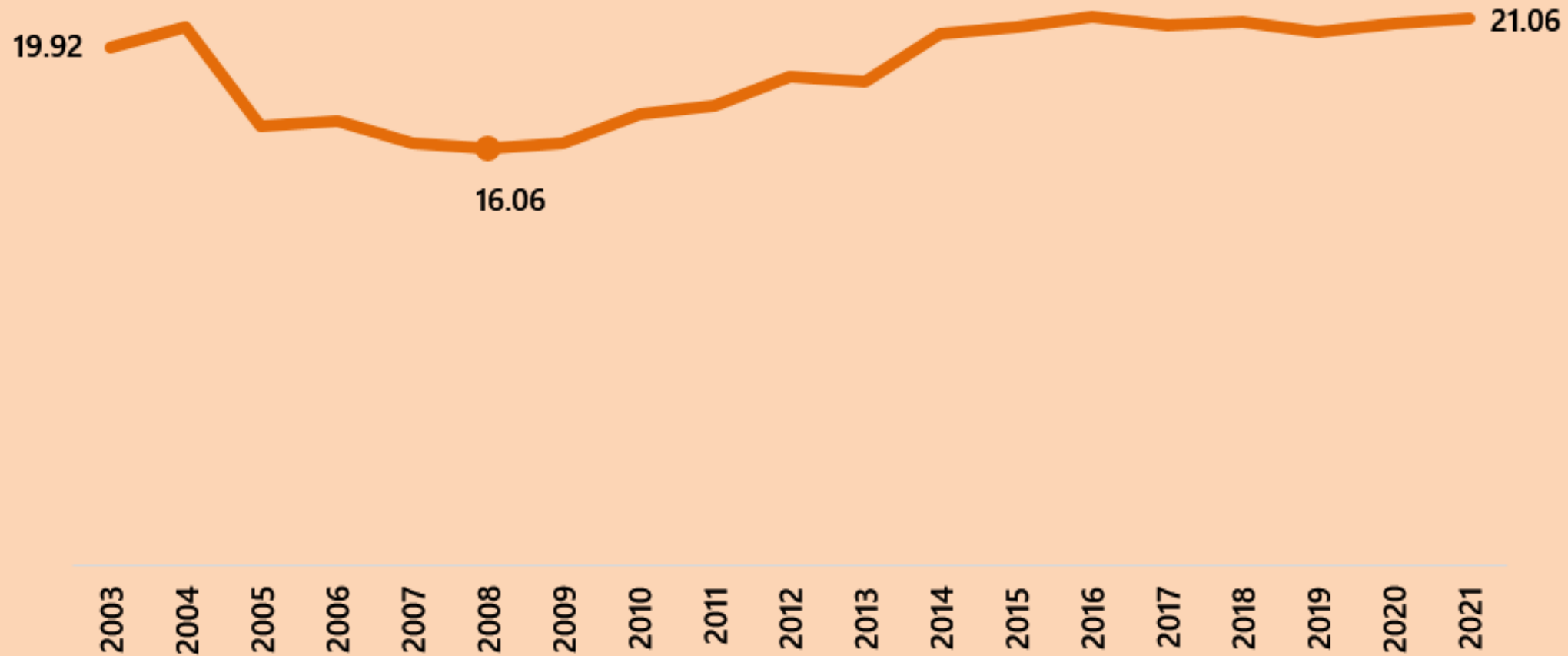
Average Single Family Tax Bill



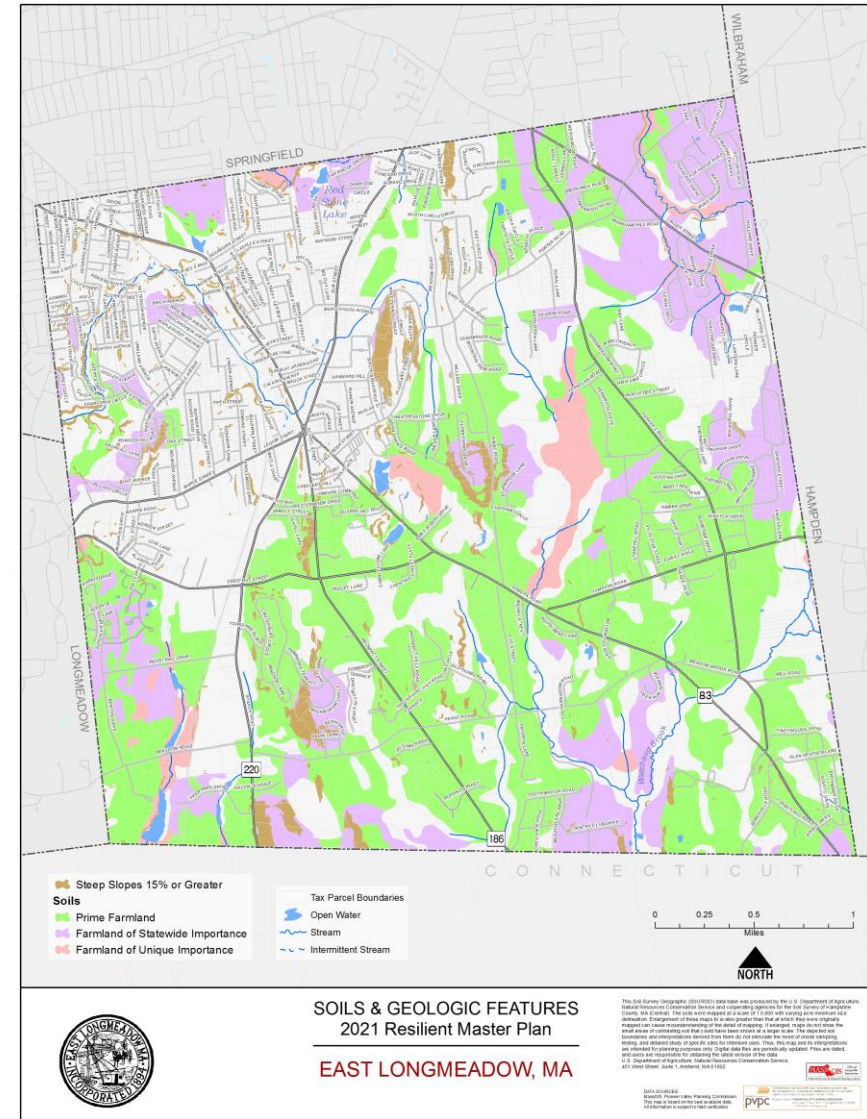
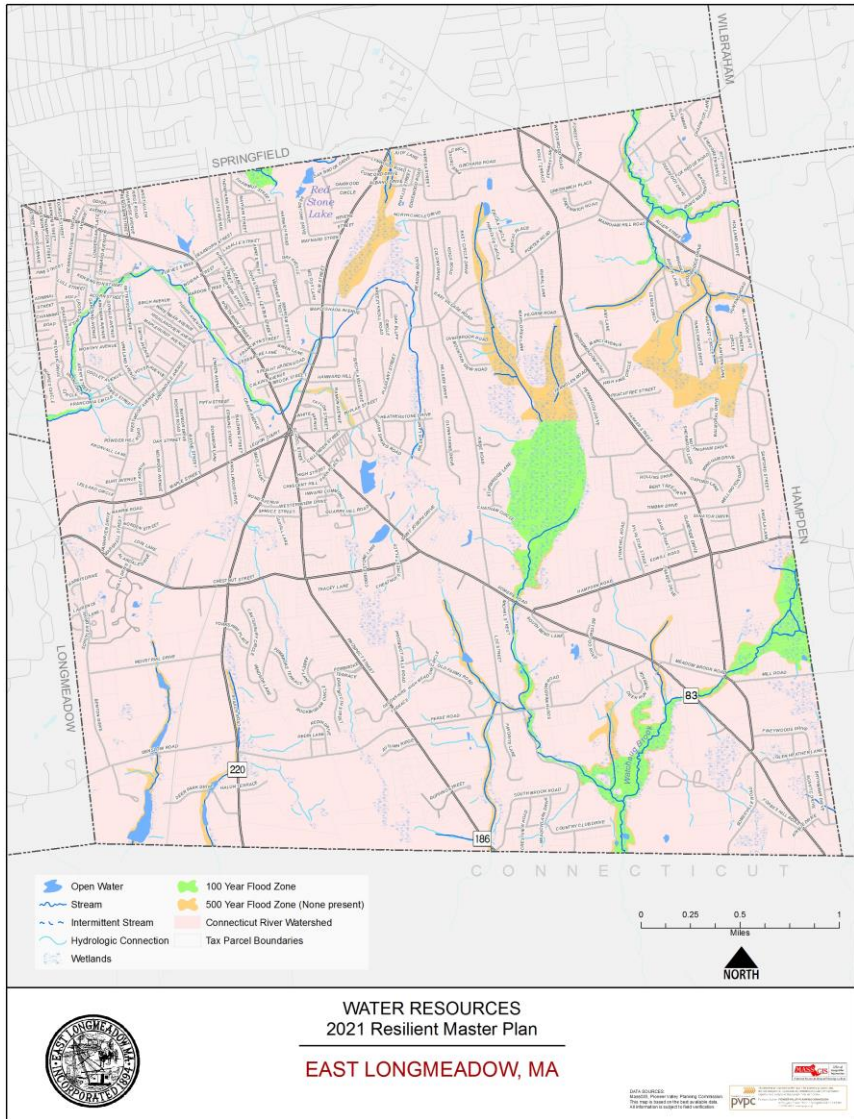
East Longmeadow's 2021 residential tax rate falls between West Springfield and Wilbraham, while Commercial, Industrial, and Personal Property Rates are lower than those in both West Springfield and Wilbraham

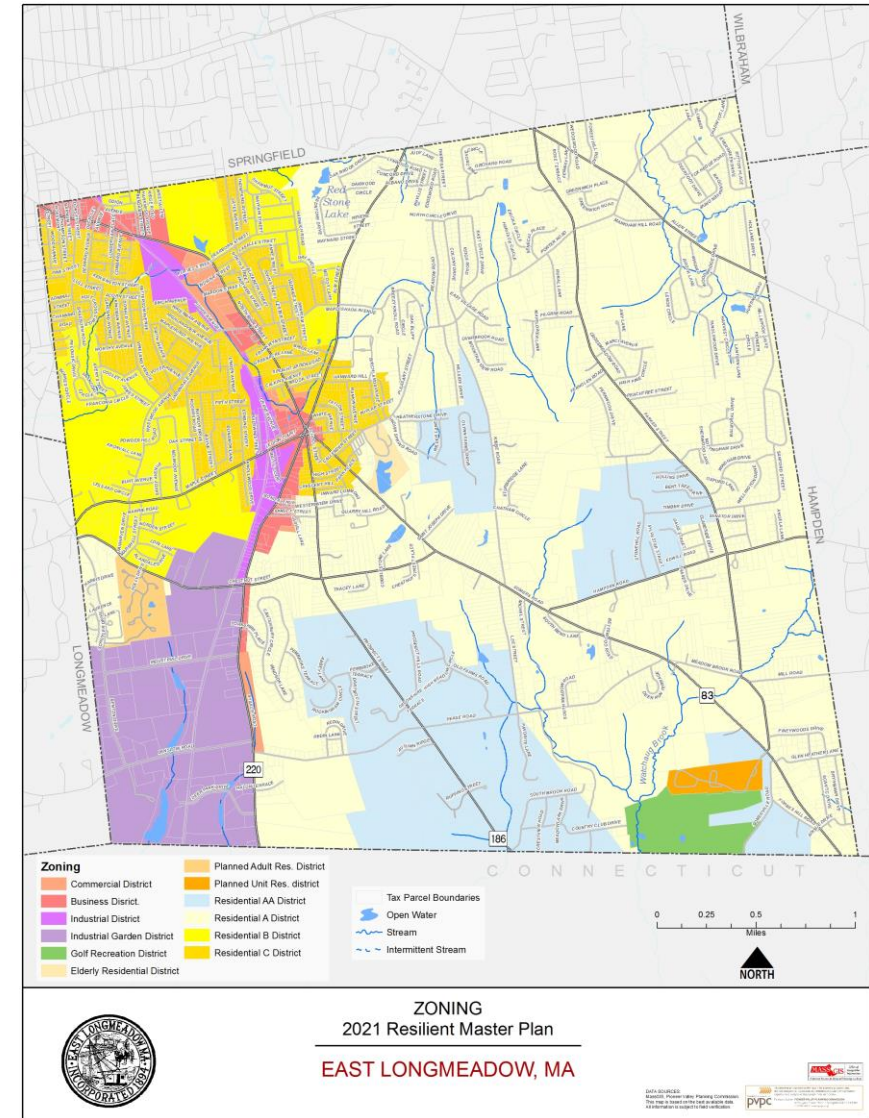
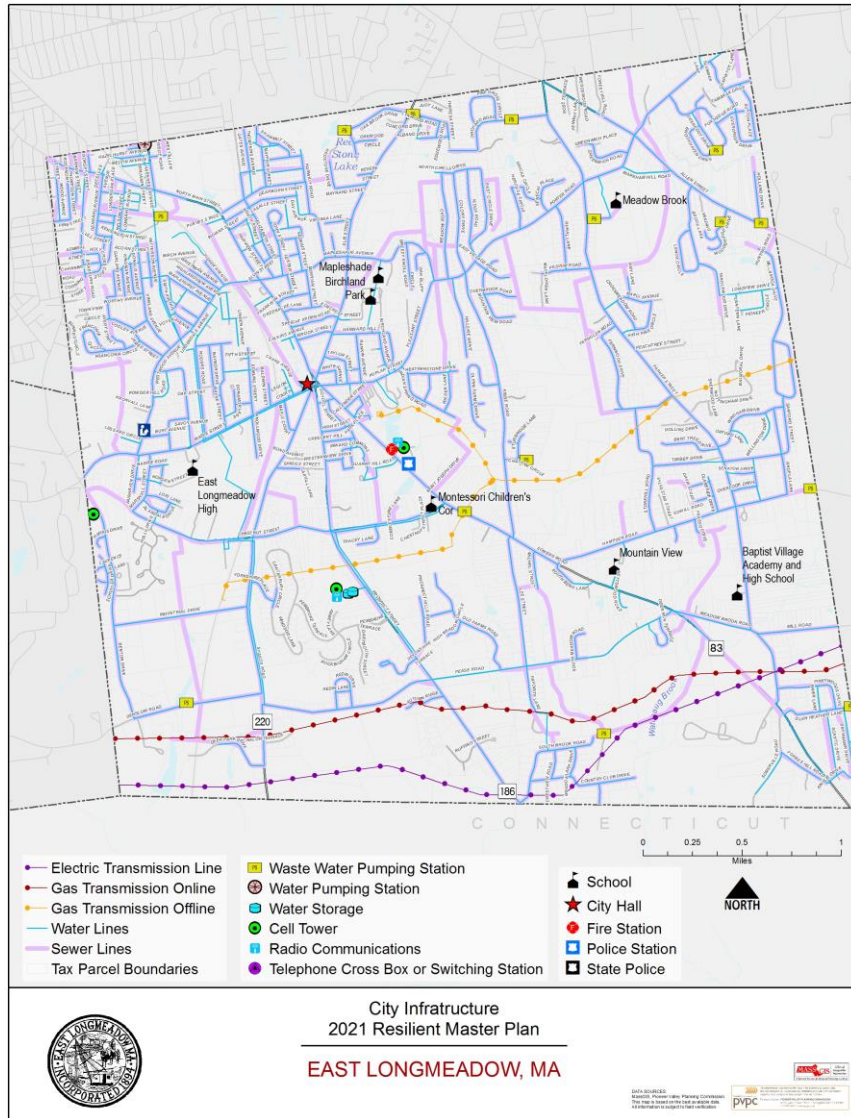


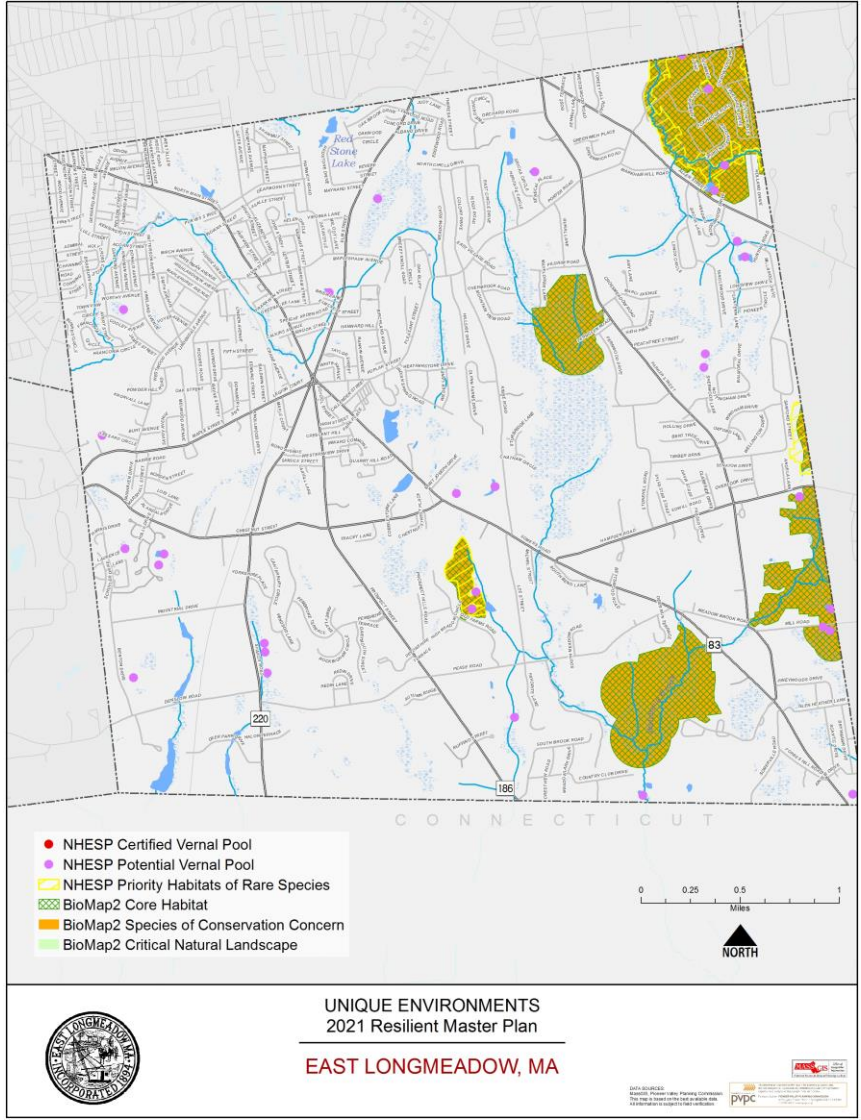
East Longmeadow's mill rate (21.06, or 2.106% in FY21) has been very stable since FY14, following a period of steady growth between FY08-FY14

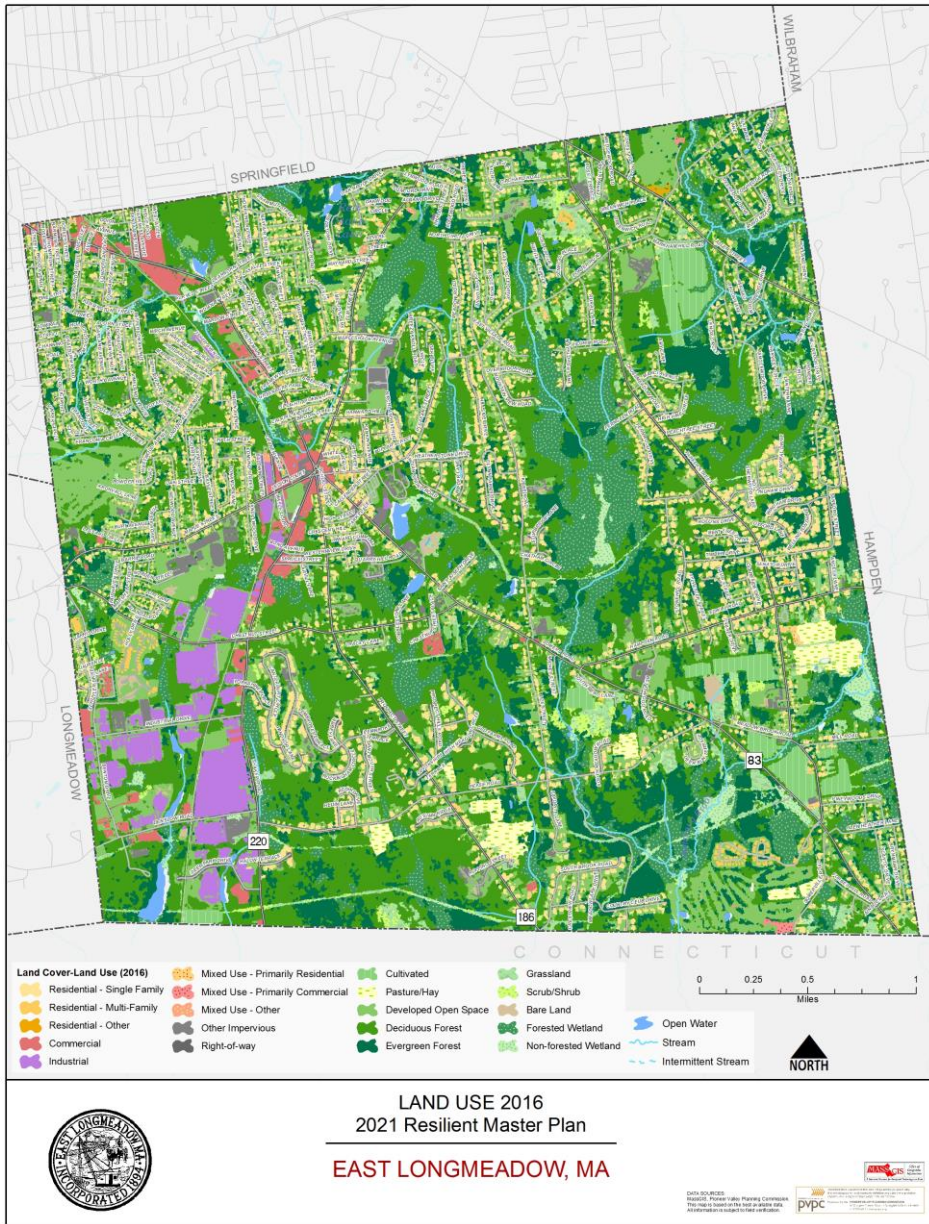


East Longmeadow has consistently had the same tax rate for all classes of property.









USEGENNAME	USEGENCODE	ACRES		SQmi
Residential - single family	11	3770.969205	45.295577%	5.892139384
Open land	2	1814.205734	21.791611%	2.83469646
Right-of-way	55	726.1990746	8.722852%	1.134686054
Tax exempt	9	464.1410777	5.575102%	0.725220434
Industrial	4	421.8965099	5.067675%	0.659213297
Residential - multi-family	12	222.2389819	2.669458%	0.347248409
Commercial	3	217.0338204	2.606935%	0.339115344
Mixed use, primarily residential	10	197.7058544	2.374774%	0.308915397
Agriculture	7	182.1517253	2.187943%	0.284612071
Mixed use, primarily commercial	30	140.9685414	1.693265%	0.220263346
Mixed use, other	20	116.3996604	1.398152%	0.181874469
Recreation	8	21.50156072	0.258269%	3.36E-02
Residential - other	13	18.59321251	0.223335%	2.91E-02
Unknown	0	8.101543347	0.097313%	1.27E-02
Water	88	3.141774043	0.037738%	4.91E-03
		8325.248276	100.000000%	13.00820043

Additional Data Breakdowns:

COVER NAME	USE GEN NAME	USE GEN CODE	ACRES
------------	--------------	--------------	-------

COVER NAME	USE GEN NAME	USE GEN CODE	USE_CODE	ACRES
------------	--------------	--------------	----------	-------

MassGIS Land Use 2016 & Aggregated Data

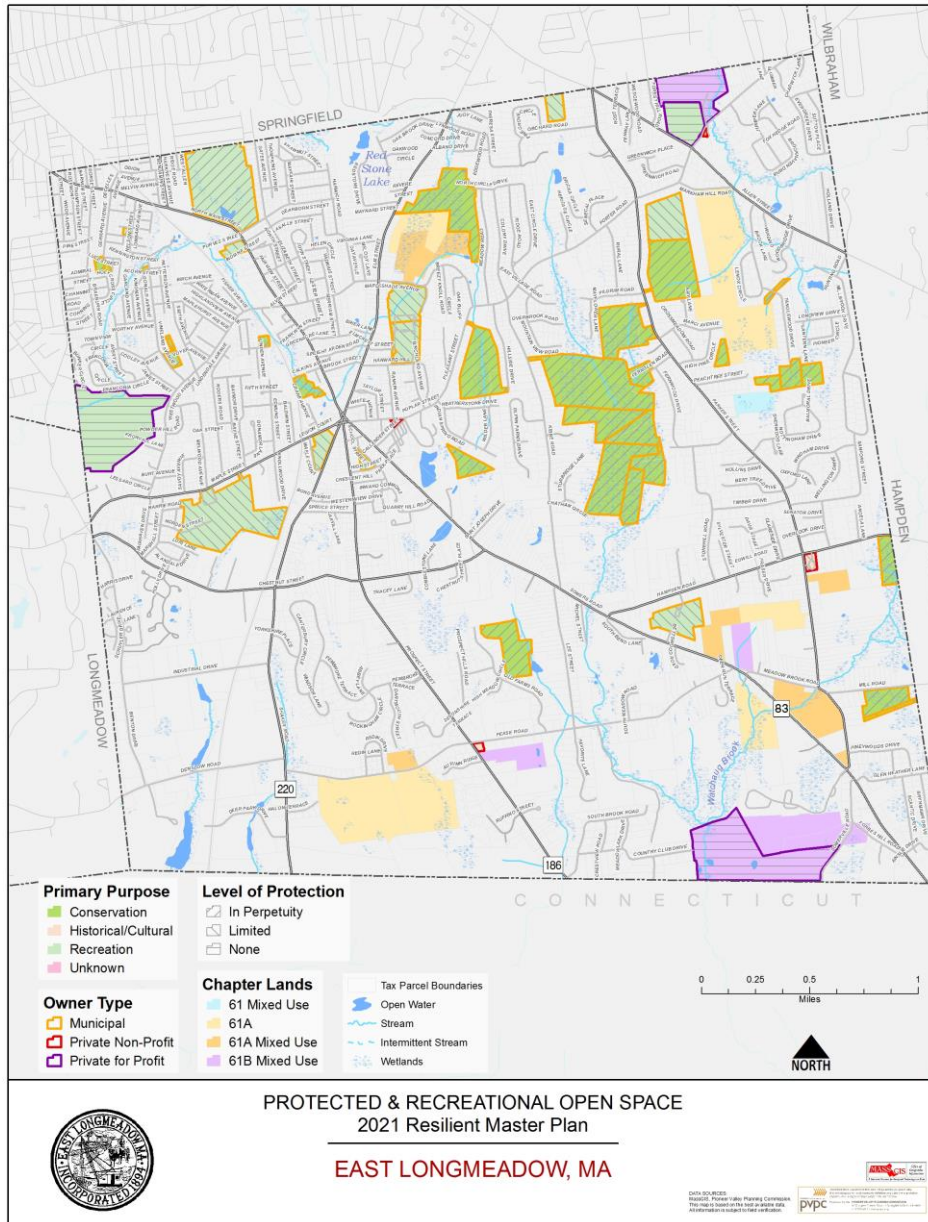


Executive Office of Energy and Environmental Affairs (EOEEA) Protected & Recreational Open Space

OS_ID	MAP_PAR_ID	SITE_NAME	FEE_OWNER
85-931	61-2-5	Craven Conservation Area	Town of East Longmeadow
85-931	61-66-0	Craven Conservation Area	Town of East Longmeadow
85-535	27-1-0	Veterans Field	Town of East Longmeadow
85-522	2/1/2000	Lull Conservation Area 1	Town of East Longmeadow
85-526	12B-23-0	Heritage Park	Town of East Longmeadow
85-526	13-23-0	Heritage Park	Town of East Longmeadow
85-530	65-25-0	Mountainview School	Town of East Longmeadow
85-513	39-29-0	Indian Spring Conservation Area	Town of East Longmeadow
85-540	74-8-B	Peachtree Road Conservation Area	Town of East Longmeadow
85-945	63-10B-0	Campbell Conservation Area-1	Town of East Longmeadow

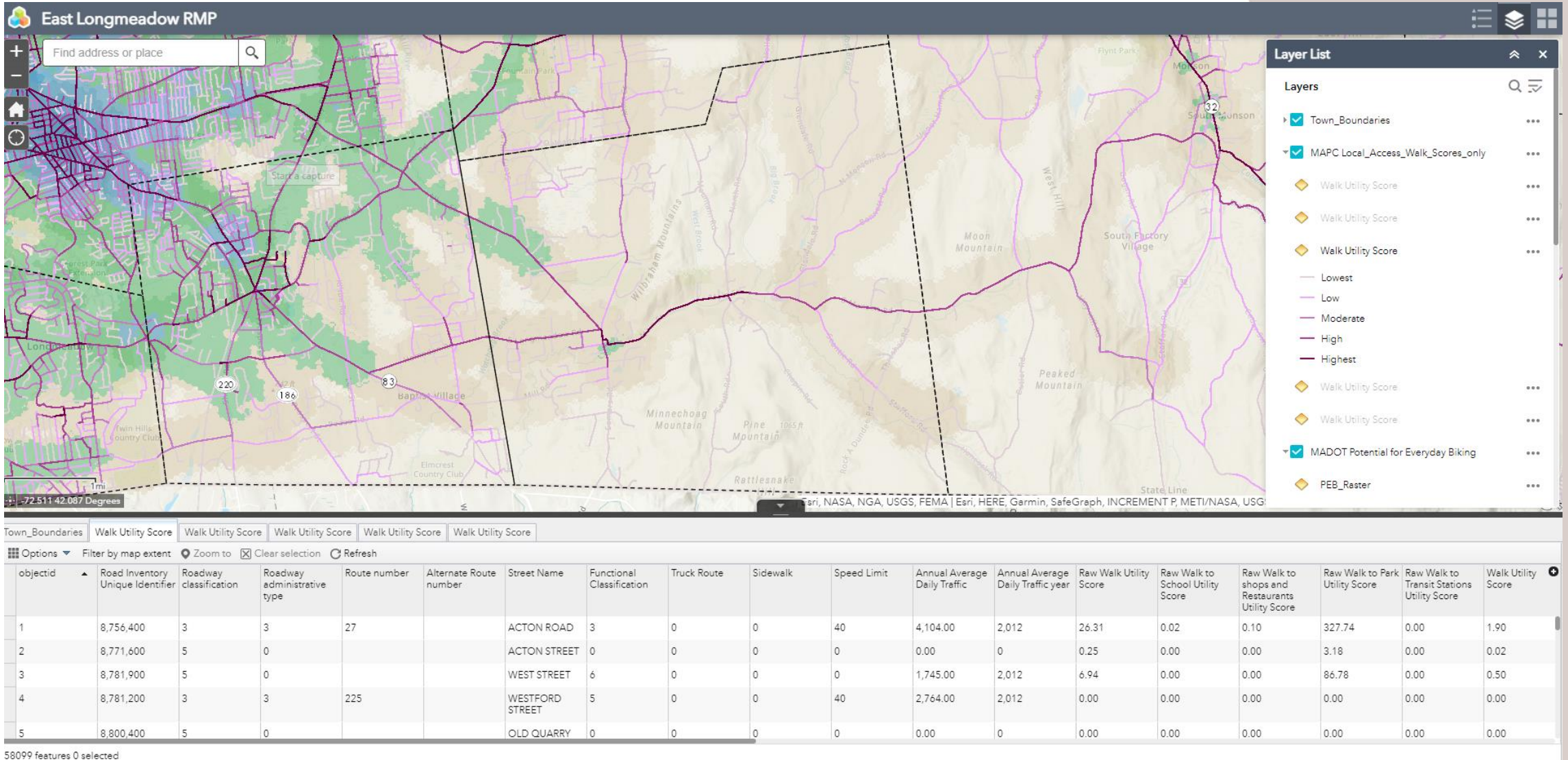
Chapter 61, 61A, 61B, and mixed use tax parcel data

Chapter_Land	MAP_PAR_ID	LOC_ID	POLY_TYPE	MAP_NO	SOURCE	PLAN_ID	LAST_EDIT
61 Mixed Use	75-13-0	F_391120_2 850680	FEE	75	OTHER		20121220
61 Mixed Use	75-13-0	F_391120_2 850680	FEE	75	OTHER		20121220
61A	32-39-0	F_383129_2 840965	FEE	32	OTHER		20121220
61A	32-39-0	F_383129_2 840965	FEE	32	OTHER		20121220
61A	78-13-0	F_392046_2 845514	FEE	78	OTHER		20121220



Protected & Recreational Open Space



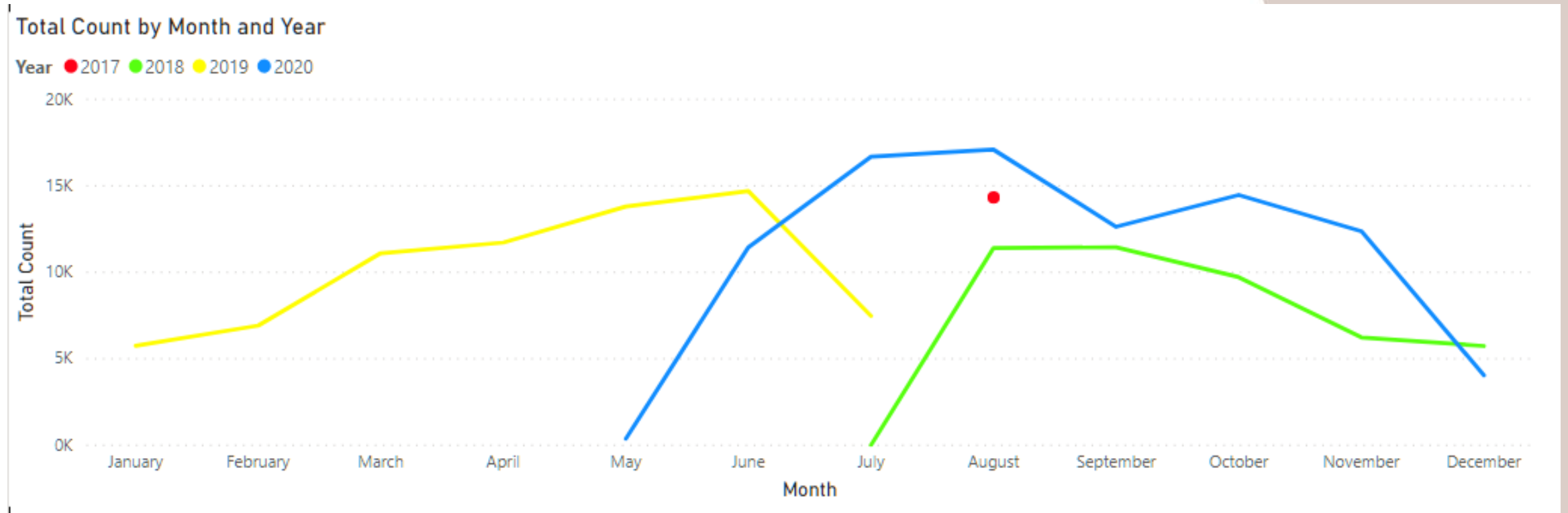


<https://pvpc.maps.arcgis.com/apps/webappviewer/index.html?id=a051a7bae23f4244863a74c88323551d>

Historic Traffic Count Data

Count Location	2003	2004	2005	2006	2007	2008	2009	2010	2011	2012	2013	2014	2015	2016	2017	2018	2019	2020
Chesnut St. Btw. Prospect St.(Rte. 186) / Shaker Rd.(Rte. 220)								6486										
Chestnut St. E/O Benton Dr. / Longmeadow T.L.								6803										
Hampden Rd. W/O Parker St.								5356										
Maple St. E/O Savoy St.												11173						
Maple St. W/O Westwood Ave.								13552										
North Main St. N/O Mapleshade Ave.								17127										
North Main St. S/O Brook St.	11796																	
Porter Rd. E/O Allen St.								9340										
Porter Rd. W/O Allen St.	6061		6553		6772		6955		6472		6456		7330		7059		7484	5969
Prospect St. @ Connecticut S.L.		2424				2461												
ROUTE 83 W/O HARKNESS AVE																		15684
Shaker Rd N/O Chestnut St.	10752							12710										
Shaker Rd. @ Connecticut S.L.		9889				9464												
Somers Rd. @ Connecticut S.L.		3236				3283												
Somers Rd. S/O Callender St.	7303							8194										

Redstone Rail Trail Historic Usage

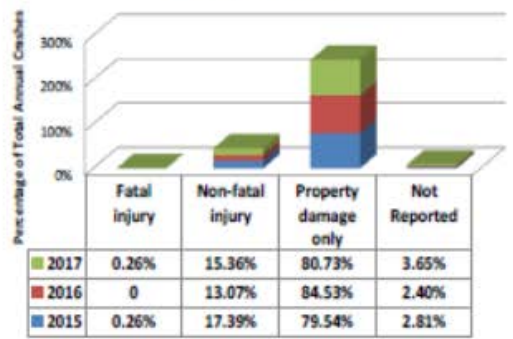




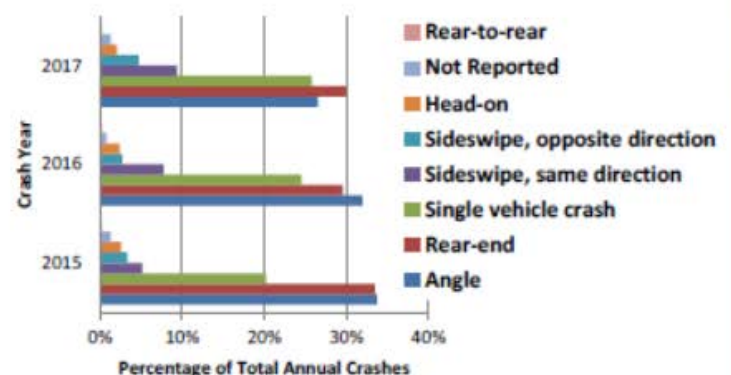
Zoom-in for best crash data point clarity

Map Not to Scale

Crash Severity



Manner of Collision



ANNUAL CRASHES
 2015 – 391
 2016 – 375
 2017 – 384

ANNUAL CRASHES PER 1000 POPULATION
 (Census 2019) 23.67

TOTAL FATAL CRASHES - 2

TOTAL NON- MOTORIST CRASHES - 15

TOP CRASH INTERSECTIONS

1. Center Square Rotary: North Main Street(Route 83), Somers Road (Route 83), Shaker Road (Route 220), Prospect Street (Route 183), Elm Street, Maple Street, and Pleasant Street (Crashes 180, EPDO* 580)
2. Allen Street and Porter Road (Crashes 21, EPDO* 141)
3. Shaker Road (Route 220) and Chestnut Street (Crashes 20, EPDO* 140)
4. Shaker Road (Route 220) and Pease Road (Crashes 8, EPDO* 108)
5. North Main Street (Route 83), Mapleshade Avenue, and Westwood Avenue (Crashes 29, EPDO* 89)

*EPDO – Equivalent Property Damage Only (Fatal and Injury Crashes = 21, Property Damage Crashes = 1)

Safety Data

KEY FINDINGS

- A total of 15 non-motorist crashes were recorded in East Longmeadow between 2015 and 2017, one resulted in fatality of a pedestrian.
- The other fatal crash involved a speeding motor vehicle which collided with a tree.
- About one fourth of the total crashes occurred at three-way intersections in the Town.
- Almost seven percent of the total crashes involved collisions with parked motor vehicles.

FIRST HARMFUL EVENT SUMMARY

Collision with motor vehicle in traffic	801
Collision with parked motor vehicle	70
Collision with animal	66
Collision with other utility pole or other support	59
Collision with utility pole	41
Collision with curb	34
Collision with tree	30
Collision with unknown fixed object	26
Collision with other	17
Collision with non-motorist	15
Collision with embankment	7
Collision with other movable object	7
Not Reported	6
Collision with guardrail	5
Overturn/rollover	3
Collision with ditch	2
Other non-collision	2

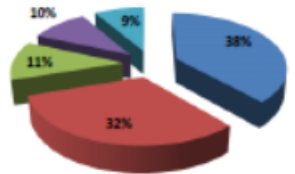
DRIVER CONTRIBUTION CODES FOR ALL DRIVERS

No improper driving	1303
Inattention or distracted	255
Failed to yield right of way	229
Not Reported	89
Followed too closely	83
Driving too fast for conditions or exceeded speed limit	81
Operating vehicle in erratic, careless, negligent or aggressive manner	49
Failure to keep in proper lane or running off road	41
Disregarded traffic signs, signals, road markings	25
Physical impairment, illness, emotional	24
Other improper action	23
Swerving or avoiding due to wind, slippery surface, vehicle, object, non-	23
Fatigued/asleep	17
Visibility obstructed	13
Made an improper turn	12
Over-correcting/over-steering	8
Glare	6
Operating defective equipment	3
Wrong side or wrong way	3

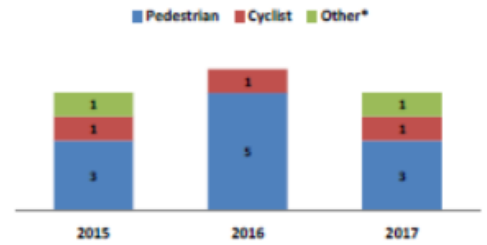
Safety Data

Roadway Classification

- Urban minor arterial or rural major collector
- Rural minor arterial or urban principal arterial
- Urban collector or rural minor collector
- Local
- Not Reported

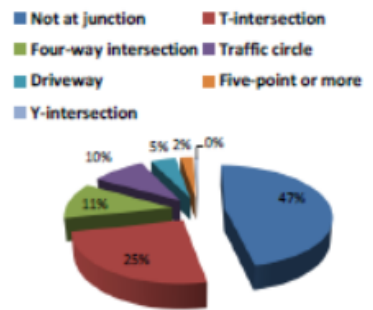


Non-motorist Crashes by Type and Year



*skater, wheelchair, unicycle, tricycle, pedal cycle etc.

Location of Crashes



East Longmeadow Rotary Crash Data

Count of Manner_Collision	Crash_Year			
Manner_Collision	2015	2016	2017	Grand Total
Angle	34	33	35	102
Head-on	1	1		2
Rear-end	14	6	8	28
Sideswipe, opposite direction			1	3
Sideswipe, same direction	6	12	13	31
Single vehicle crash	2	1	8	11
Unknown		1	1	2
Grand Total	57	55	68	180

Manner_Collision	2015	2016	2017
Angle	34	33	35
Head-on	1	1	
Rear-end	14	6	8
Sideswipe, opposite direction			1
Sideswipe, same direction	6	12	13
Single vehicle crash	2	1	8
Unknown		1	1
Grand Total	57	55	68

Weather_Conditions	2015	2016	2017
Clear	43	46	51
Cloudy	8	2	9
Cloudy/Rain	2	1	2
Cloudy/Snow	1		
Rain	2	5	3
Rain/Cloudy			1
Sleet, hail (freezing rain or drizzle)		1	
Snow	1		
Snow/Cloudy			1
Unknown			1
Grand Total	57	55	68

Crash_Severity	2015	2016	2017
Non-fatal injury	6	6	8
Property damage only (none injured)	51	49	60
Grand Total	57	55	68